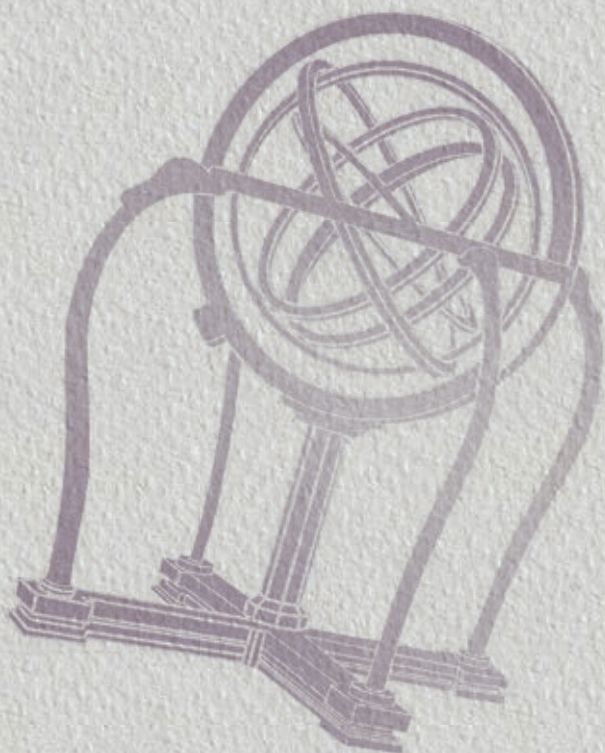
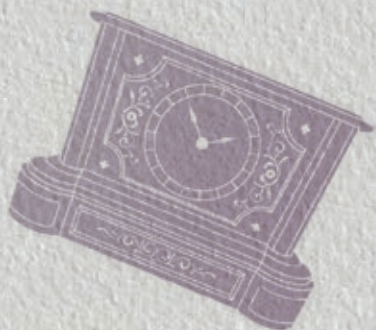


國立
科學工藝博物館

113 年報

2024 NATIONAL SCIENCE AND
TECHNOLOGY MUSEUM
Annual Report



國立科學工藝博物館
NATIONAL SCIENCE AND TECHNOLOGY MUSEUM

館長序

作為國立科技與工業博物館，本館自 1997 年開館以來即致力將人類科技進步歷程及本土重要產業發展引介給民眾；同時作為國立社教機構，推動大眾科普教育，鼓勵全民終身學習，是本館發展的另一重點。本館未來將持續努力，朝向「提供民眾多元服務的專業教育機構」願景前進。

2024 年對本館來說是豐收的一年。在全體同仁的共同努力下，我們在科學教育、展覽策劃、公共服務及經營效益等方面均取得了顯著的成就。包括：推動常設展廳召集人制度，有效提升展廳營運效能；參加 2024 年環境部主辦之環境教育設施場所認證，取得優等成績；整合館內票務、導覽、客服、環控、典藏、展示及活動報名近年來推動數位化之成果，推出「掌握科工」行動服務網頁，讓觀眾可以透過手機以智慧、便捷的方式暢遊本館；自策「星動時刻·量測傳說」特展，內容以本館典藏之文物為主體並結合產官學資源共襄盛舉，推出之後受到許多民眾的肯定；推動「科學小樹苗公益活動計畫」，落實弱勢族群公平共享學習；完成「園區全方位優化改造工程」，提升社區居民遊憩安全及品質；持續取得 ISO50001 能源管理系統認證，落實節能減碳；積極經營社群媒體，關注輿情即時回應，並強化行銷效能；2024 年本館的財務盈餘狀況亦較 2023 年有所成長。

高雄市鐵路地下化及輕軌運輸系統於本館附近均設有車站，加以高雄市正推動產業轉型，本館面對的外部環境、交通、人口及民眾需求皆快速轉變中；資訊科技的快速進展，氣候變遷的威脅，也讓政府及社會大眾對於博物館的想像與期待日趨多元。上述大環境的變動是本館的挑戰也是機會，期許館內所有同仁能持續發揮專業，精進本土產業文物典藏研究量能，推出多元優質的展示及教育活動，讓更多的民眾看見科工館的價值。

國立科學工藝博物館館長

李秀鳳

Director-General's Preface

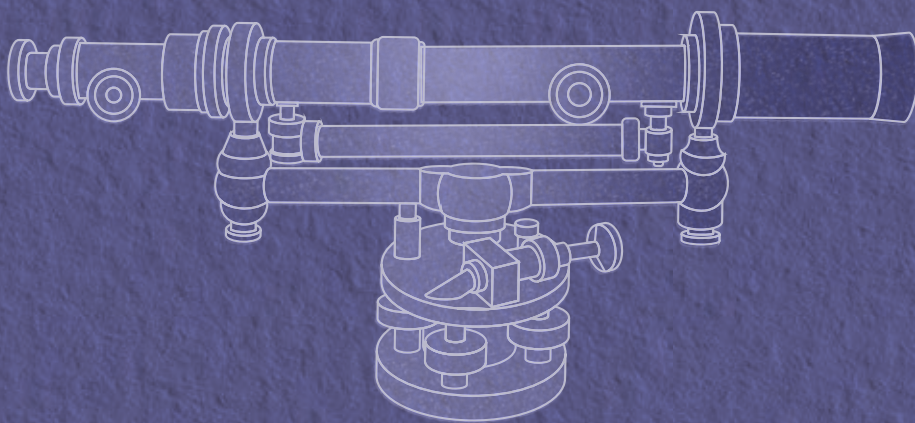
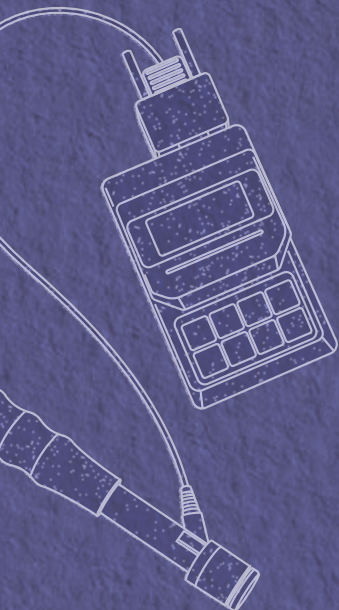
Since our opening in 1997, the National Science and Technology museum has been dedicated to introducing the progress of human technology and the development of important local industries to the public. As a national social education institution, promoting popular science education and encouraging lifelong learning for all citizens is another focus of our development. The Museum will continue to strive towards realizing the vision of becoming "a professional educational institution providing diverse services to the public."

2024 has been a fruitful year for the Museum. Through the collective efforts of all our staff members, we have achieved significant achievements in science education, exhibition planning, public service, and operational effectiveness. These include implementing a convener system for permanent exhibition halls to effectively enhance operational efficiency; participating in and achieving excellent results in the 2024 Environmental Education Facility Certification organized by the Ministry of Environment; integrating digital achievements in ticketing, guided tours, customer service, environmental control, collections, exhibitions, and activity registration to launch the "NSTM at Hand" mobile service webpage, enabling visitors to tour the Museum smartly and conveniently via mobile phones; self-curating the special exhibition "Stellar Moments & Legends of Measurement" featuring the Museum collections and combining resources from industry, government, and academia, which received much public acclaim; promoting the "Little Science Sprouts" Project to ensure fair learning access for disadvantaged groups; completing the "Comprehensive Park Area Optimization and Renovation Project" to improve recreational safety and quality for community residents; continuously maintaining ISO50001 Energy Management System certification to implement energy conservation and carbon reduction; actively managing social media, responding to public opinion in real-time, and strengthening marketing effectiveness; the Museum's financial surplus in 2024 also showed growth compared to 2023.

With stations of Kaohsiung's Railway Underground Project and Light Rail Transit System located near the Museum, and Kaohsiung City actively promoting industrial transformation, the Museum faces rapidly changing external environment, transportation, demographics, and public needs; the rapid advancement of information technology and threats of climate change have also made government and public expectations of museums increasingly diverse. The aforementioned environmental changes present both challenges and opportunities for the Museum. We hope all staff members can continue to exercise their expertise, enhance research capabilities in local industrial artifacts, and launch diverse, high-quality exhibitions and educational activities to help more people appreciate the value of NSTM.

Director-General, National Science and Technology Museum

Lee, Hsin-Feng



2 館長序 / Director-General's Preface

6 本館簡介 / Museum Introduction

12 業務績效 / Business Performance

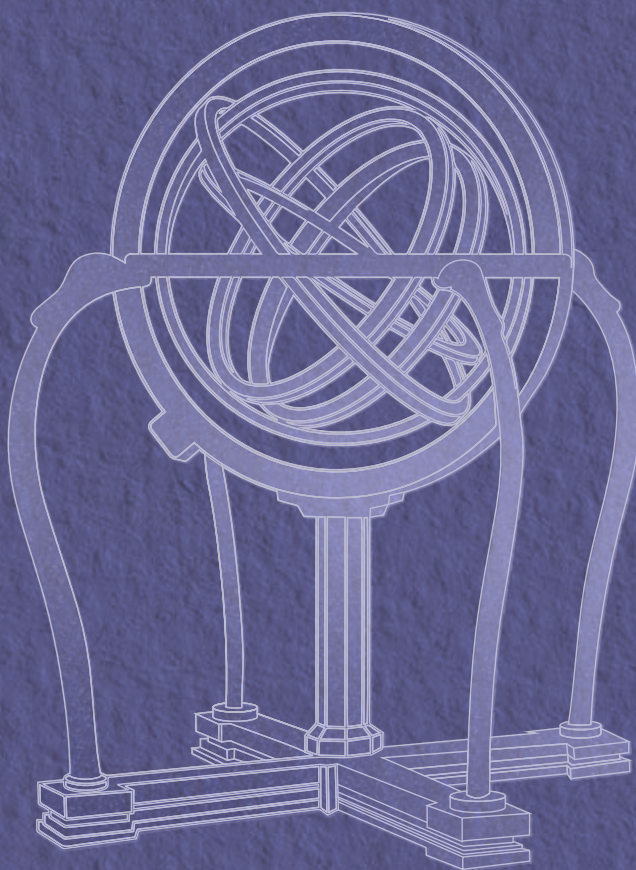
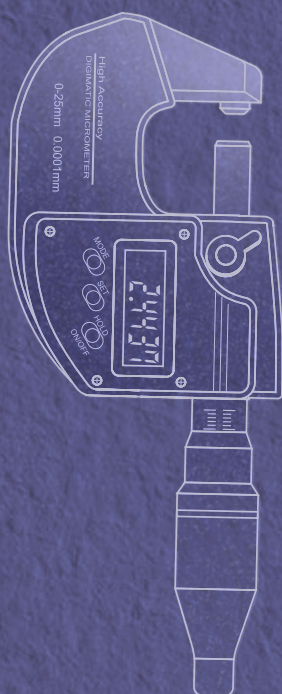
12 蒐藏研究 Collections and Research

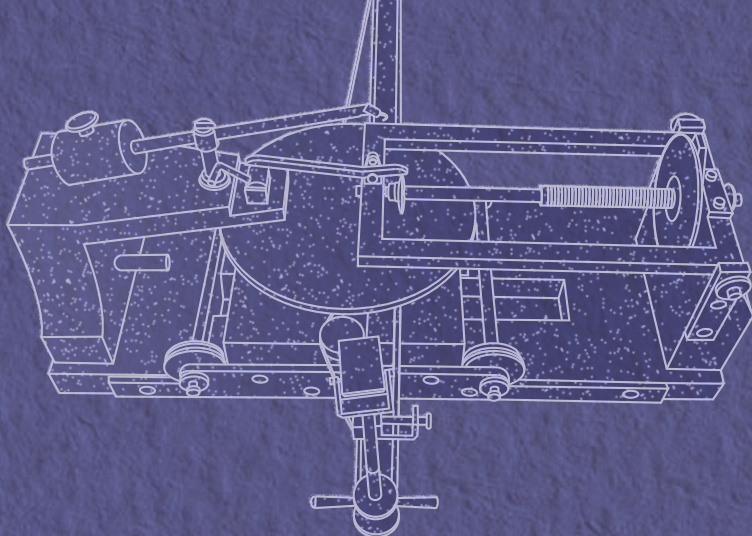
20 展示 Exhibitions

32 科技教育 Science and Technology Education

48 公共服務 Visitor Services

62 總務與環境 General Affairs and Environment





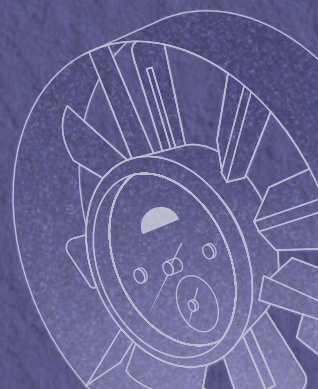
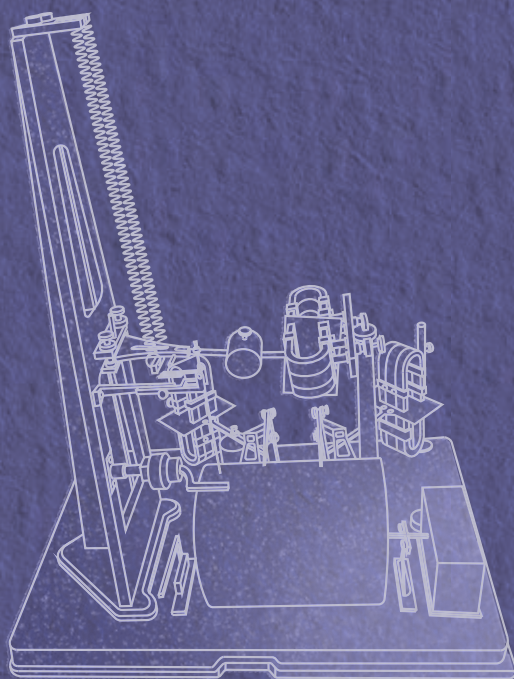
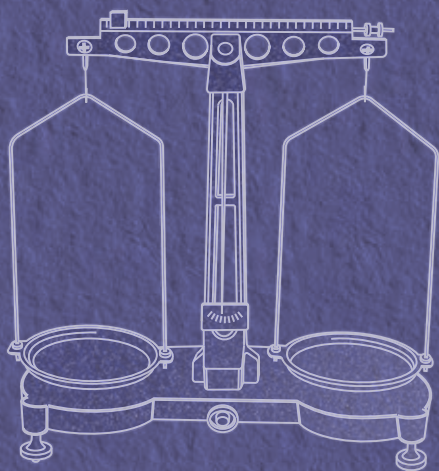
70 人事概況 / Personnel Overview

74 財務概況 / Financial Overview

78 本館票價與會員介紹 / Ticket Prices and Membership Introduction

80 本館營業時間及交通 / Museum Hours and Transportation

82 2024 年大事紀 / 2024 Major Events

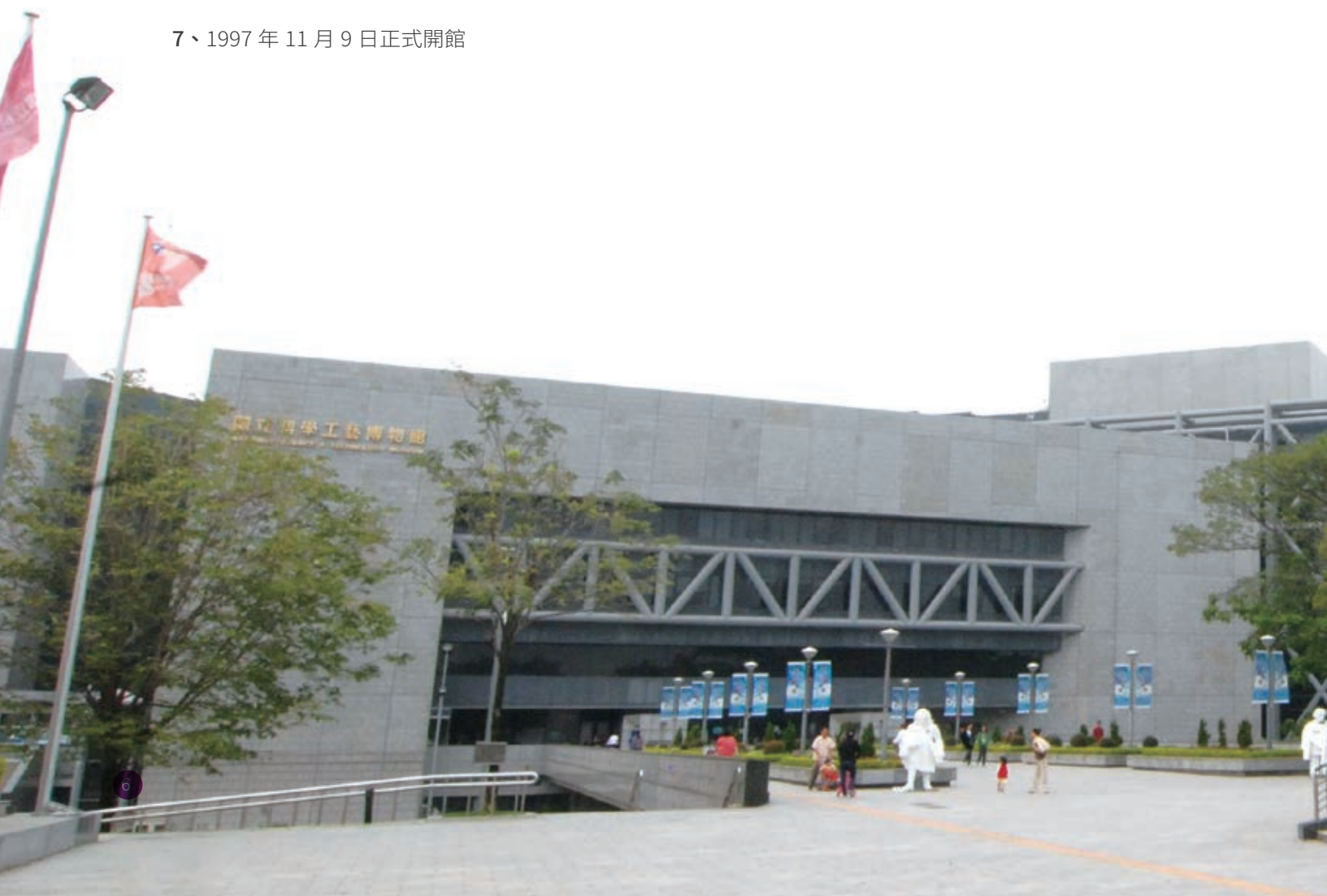


本館簡介

歷史沿革

國立科學工藝博物館（以下簡稱科工館）係行政院於 1979 年訂定之 12 項建設計畫中明定興建之中央文教設施之一，是國內第一座應用科學博物館，亦為南台灣第一個國立社教機構。本館籌建歷程簡述如下：

- 1、1986 年 7 月成立籌備處
- 2、1988 年 11 月行政院核定建管整體計畫
- 3、1989 年 10 月 2 日動工興建
- 4、1997 年 1 月 1 日奉行政院及教育部核定改制正式成立
- 5、1997 年 7 月 26 日南館啟用
- 6、1997 年 9 月 21 日基地公園開放
- 7、1997 年 11 月 9 日正式開館



Museum Introduction

Historical Development

The National Science and Technology Museum (hereinafter referred to as NSTM) was one of the central cultural and educational facilities specified in the 12 Construction Projects determined by the Executive Yuan in 1979. It is the first applied science museum in Taiwan and the first national social education institution in southern Taiwan. The museum's establishment process is briefly described below:

1. July 1986: Establishment of the Preparatory Office
2. November 1988: Executive Yuan approved the overall construction and management plan
3. October 2, 1989: Construction began
4. January 1, 1997: Officially established as approved by the Executive Yuan and Ministry of Education
5. July 26, 1997: South Complex opened
6. September 21, 1997: Ground park opened
7. November 9, 1997: Official opening



園區介紹

本館位於高雄市三民區九如一路（原高雄市六號公園內），佔地面積 18.35 公頃，分為南館與北館：

北館：建築面積 15,007.55 平方公尺，設置行政中心、常設展示廳、特展廳、多功能大銀幕電影院、開放式典藏庫、創客工場、科學教室等觀眾服務設施。

南館：建築面積 5,412.61 平方公尺，設置科普圖書館、多功能度量衡廣場、大型演講廳、研討教室、典藏庫、樂活節能屋及員工子女非營利幼兒園等場所。



Introduction

Located on Jiuru 1st Road, Sanmin District, Kaohsiung City (formerly Kaohsiung City Park No. 6), the Museum occupies 18.35 hectares and is divided into South and North Complexes:

North Complex: Building area of 15,007.55 square meters, housing the administrative center, permanent exhibition halls, special exhibition halls, Multifunctional 3D Theater, Open Storage, True Dreamland, science classrooms, and other visitor service facilities.

South Complex: Building area of 5,412.61 square meters, housing the Popular Science Library, Multifunctional Measurement Square, auditorium, Meeting Rooms, Collections Storage, and LOHAS Energy Conservation House, and non-profit kindergarten for staff children.



本館鳥瞰圖
Aerial View of the NSTM

館徽說明

本館館徽融合幾何與太極圖形。幾何造型代表科學的規則性，也標示出本館建築的特色 – 圓形館、三方館、二方館、三角大廳等；太極圖形則象徵人文的精神，其蘊含的陰與陽、天與地的觀念，傳達出科技與人文相生相輔的崇高理想。色彩運用冷靜的藍與親切的紅，為應用科學與人類生活的互動關係，作了更進一步的詮釋。



建館宗旨

本館以推廣社會科技教育為主要功能，透過研究、設計、展示各項科技主題，引入重要科技之發展及對人類生活的影響。

發展目標

1. 充實民眾的科技知識，啟發對科學研究之興趣，提升國民科技素養。
2. 推動社會教育及科普教育，建構優質且多元的終身學習場域，促進公眾全齡化。
3. 透過蒐藏、研究、展示、教育、文創拓展與國內外博物館之交流、合作，提升博物館專業影響力。
4. 發展並運用參與、合作、近用、平權策略，致力成為結合教育、研究、娛樂和社會服務的綜合性機構。
5. 營造友善、安全、舒適、智慧化之環境，並提供愉悅與創新的服務，成為世界一流的應用科技博物館。

Museum Logo Description

The Museum logo combines geometric and tai-chi patterns. The geometric design represents the regularity of science and highlights the Museum's architectural features: circular hall, tri-square hall, bi-square hall, and triangular lobby; the tai-chi pattern symbolizes humanistic spirit, with its concepts of yin and yang, heaven and earth, conveying the lofty ideal of science and humanities complementing each other. The color scheme uses cool blue and friendly red to further interpret the interactive relationship between applied science and human life.

Founding Purpose

The Museum's main function is to promote social technology education, introducing important technological developments and their impact on human life through research, design, and exhibition of various technology themes.

Development Goals

1. Enrich public knowledge of technology, inspire interest in scientific research, and enhance national technological literacy.
2. Promote social education and popular science education, build a high-quality and diverse lifelong learning venue, and facilitate public age-inclusiveness.
3. Enhance museum professional influence through collection, research, exhibition, education, cultural creativity, and exchanges and cooperation with domestic and international museums.
4. Develop and implement strategies for participation, cooperation, accessibility, and equality, striving to become a comprehensive institution combining education, research, entertainment, and social services.
5. Create a friendly, safe, comfortable, and smart environment, and provide pleasant and innovative services to become a world-class applied technology museum.

業務績效

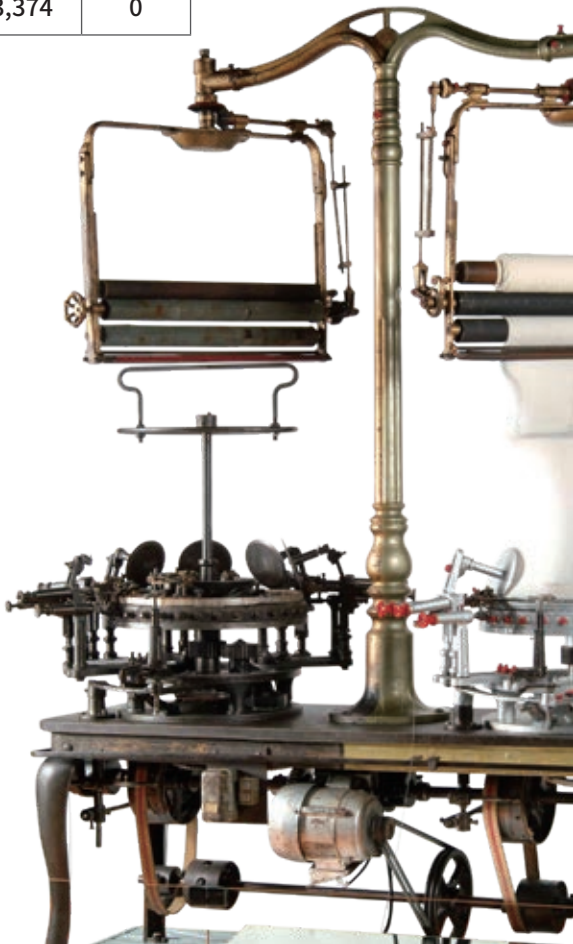
蒐藏研究

本年成果涵蓋三大面向：蒐藏方面，將暫存品改列永久性典藏並持續徵集重要科技文物；研究方面，發表多篇論文並提出重要產業報告；推廣方面，透過展覽與工作坊深化公眾對科學文物的認識與關注。

蒐藏成果

1、徵集入藏：本館科技文物之蒐集、典藏，累計藏品數量為 53,636 件。詳見表 1。

項目 年度	合計	採集	購買	受贈	轉移	其他	累計 藏品 數量	暫管
2024 年	2	0	0	2	0	0	53,636	0
2023 年	39	0	0	22	17	0	53,634	0
2022 年	99	4	0	81	14	0	53,595	1
2021 年	122	19	0	64	39	0	53,496	13
2020 年	412	3	0	409	0	0	53,374	0



銅製加速腔、湯姆金針織機、花旗鎖 - 雙羊頭、天文子午儀 (由左至右)
The Radio Frequency Cavities of LEP, Tompkins Knitting Machine, Pattern
lock-two goat heads, G. Prin Paris Transit. (from left to right)

Business Performance

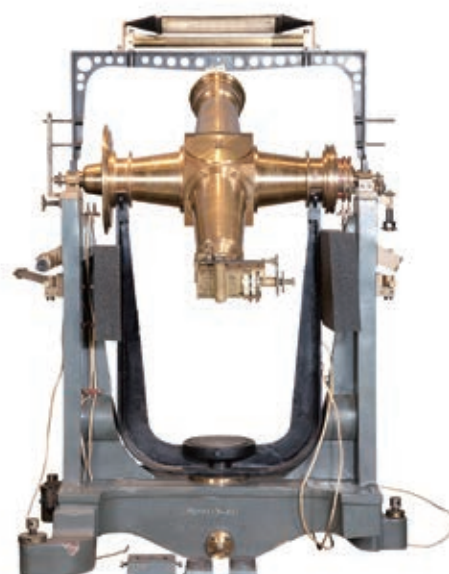
Collection Achievements

This year's achievements cover three main aspects in collections, we processed temporary items and continued to collect important technological artifacts; in research, we published multiple papers and presented important industry reports; in promotion, we deepened public understanding and awareness of scientific artifacts through exhibitions and workshops.

Collection Achievements

1. Acquisition Collections: The Museum's collection and preservation of technological artifacts have accumulated 53,636 items. See Table 1 for details.

Items Year	Total	Collected	Purchased	Donated	Transferred	Others	Cumulative Collection Count	Temporary Custody
2024	2	0	0	2	0	0	53,636	0
2023	39	0	0	22	17	0	53,634	0
2022	99	4	0	81	14	0	53,595	1
2021	122	19	0	64	39	0	53,496	13
2020	412	3	0	409	0	0	53,374	0



2、蒐藏利用：除於本館常設展示廳（含公共空間展覽）展出，亦貸出館外展覽，2024 年蒐藏利用統計如表 2。

表 2 年科技文物蒐藏品利用統計表

年度 \ 項目	合計	研究	展示	其他
2024	47,221	34,445	2,264	10,512
2023	4,013	44	3,173	796
2022	7,482	61	2,956	5,486
2021	4,870	102	3,008	1,760
2020	10,785	138	3,084	7,563

3、文物修復：配合本館各項展示活動，進行文物檢視、修復或維護作業，2024 年將本館分別於 2005 年及 2006 年退休之迎賓機器人（鐵克納與賽恩絲機器人）進行修復，重新展示並與民眾互動。



將本館藏品鐵克納與賽恩絲機器人進行修復後，於開放式典藏庫與民眾互動。After restoration, the Museum's Techna and Science robots interact with the public in the open storage area.

研究成果

研究同仁以本身負責業務或運用本館蒐藏進行研究，2024 年研究成果詳如表 3。

表 3 近 5 年研究成果統計表

年度 \ 項目	期刊論文	研討會論文	研究計畫	獲邀學術演講	學術研討會	學術講座
2024	25	29	10	1	2	16
2023	25	33	7	1	1	18
2022	35	45	16	5	2	18
2021	35	45	16	5	2	18
2020	33	35	16	2	1	17



與南藝大合辦「跨域 X 創新」2024 國際博物館館長論壇
Co-organized "Cross-Domain X Innovation" 2024 International Museum Directors Forum with Tainan National University of the Arts

2. Collection Utilization: In addition to being displayed in our permanent exhibition halls (including public space exhibitions), items are also loaned for external exhibitions. The statistics on collection utilization in 2024 are shown in Table 2.

Table 2. Statistics of Technological Artifact Collection Utilization Over the Past 5 Years

Year \ Items	Total	Research	Exhibition	Others
2024	47,221	34,445	2,264	10,512
2023	4,013	44	3,173	796
2022	7,482	61	2,956	5,486
2021	4,870	102	3,008	1,760
2020	10,785	138	3,084	7,563

3. Artifact Restoration: In conjunction with various exhibition activities, artifact inspection, restoration, or maintenance operations were conducted. In 2024, we restored the greeting robots (Techna and Science robots) that were retired in 2005 and 2006, respectively, returning them to display for public interaction.



陳安順資深工程師協助修復早期電傳打字機並拍攝記錄操作說明。

Senior Engineer Chen An-shun assisted in restoring early teletypewriters and documented operating instructions.

Research Achievements

Research staff conducted studies based on their respective responsibilities or utilizing museum collections. The 2024 research achievements are detailed in Table 3.

Table 3. Statistics on Research Achievements Over the Past 5 Years

Year \ Items	Journal Papers	Conference Papers	Research Projects	Invited Academic Speeches	Academic Conferences	Academic Lectures
2024	25	29	10	1	2	16
2023	25	33	7	1	1	18
2022	35	45	16	5	2	18
2021	35	45	16	5	2	18
2020	33	35	16	2	1	17

推廣成果

1、推廣活動：本於「啟發探索、創新思維、立足科技、追求永續」之使命，持續進行藏品推廣工作；並透過工作坊、教育闖關活動及體驗活動等，提升藏品對公眾之吸引力。2024 年推廣成果如表 4。

表 4 2024 年推廣成果一覽表

推廣方式	活動成果	藏品使用
科普教育推廣	主題推廣活動：16 場 假日科學體驗活動：18 場。 教師研習：7 場。 行動教具及科學知識宣導活動：22 場。	量測類 9 件 災防類 16 件
藏品體驗工作坊 / 展演活動	印刷類文物：78 場。 紡織類文物：9 場。 專業類課程：8 場。 藏品互動體驗活動：8 場。	印刷類 18 件 量測類 4 件 機械類 8 件
文物展示及運用	主題特展：5 場。 駐點式展示：1 場。	電視類 4 件 印刷類 31 件 電子類 6 件 光學類 20 件 量測類 18 件



「520 世界計量日」科學教育推廣活動
"520 World Metrology Day" Science Education Promotion Activity



「活印・創藝」工作坊活動照片
"Letterpress Printing & Creative Arts" Workshop Activity Photo

Promotion Achievements

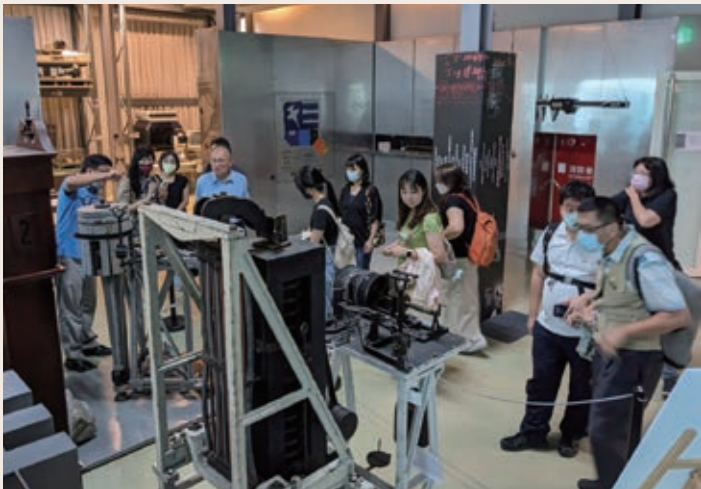
1. Promotional Activities: Following our mission of "Inspiring Exploration, Innovative Thinking, Grounding in Technology, Pursuing Sustainability," we continue to promote our collections and enhance the collections' public appeal through workshops, educational challenge activities, and experiential activities. 2024 promotion achievements are shown in Table 4.

Table 4. 2024 Promotion Achievements Overview

Promotion Method	Activity Results	Collection Usage
Popular Science Education Promotion	Themed promotional activities: 16 sessions Weekend science experience activities: 18 sessions. Teacher training: 7 sessions. Mobile teaching aids and science knowledge promotion activities: 22 sessions.	Measurement items: 9 pieces Disaster prevention items: 16 pieces
Collection Experience Workshops/Exhibition Activities	Printing-related artifacts: 78 sessions. Textile-related artifacts: 9 sessions. Professional courses: 8 sessions. Collection interactive experience activities: 8 sessions.	Printing items: 18 pieces Measurement items: 4 pieces Mechanical items: 8 pieces
Artifact Exhibition and Utilization	Themed special exhibitions: 5 sessions. Stationed exhibitions: 1 session.	Television items: 4 pieces Printing items: 31 pieces Electronic items: 6 pieces Optical items: 20 pieces Measurement items: 18 pieces



「活印・創藝」工作坊活動照片
"Letterpress Printing & Creative Arts"
Workshop Activity Photo

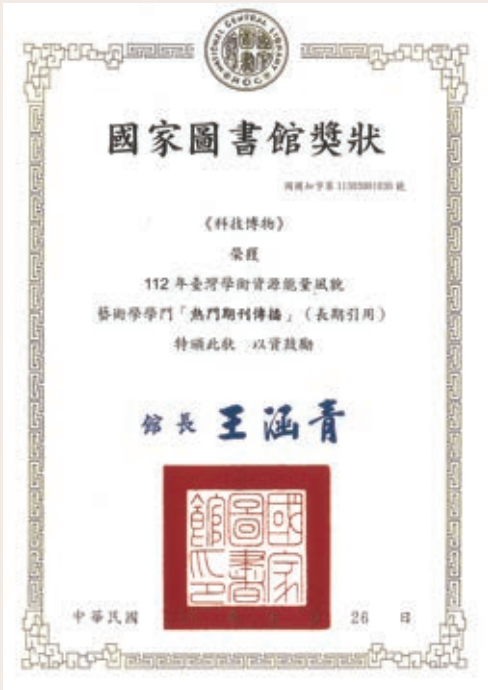
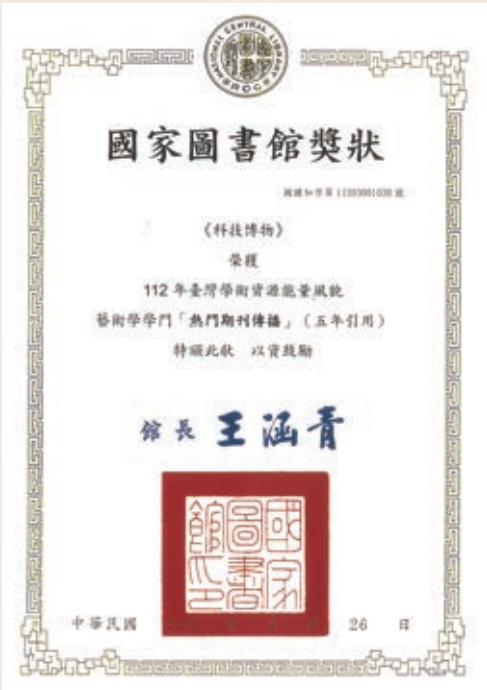


開放式典藏庫之「地震儀特展」現況
Current Status of "Seismograph Special
Exhibition" in Open Storage

2、**出版品：**由本館發行，並作為臺灣科技與社會研究學會刊物之《科技、醫療與社會》期刊，自 2001 年 3 月創刊至今，已成為科技與社會領域研究發表之重要刊物。本館發行之《科技博物》期刊，2024 年再度於國家圖書館「臺灣學術資源能量風貌報告發布會」中，榮獲藝術學學門「熱門期刊傳播獎（五年引用）」及「熱門期刊傳播獎（長期引用）」。近 5 年出版品統計表如表 5。

表 5 近 5 年出版品統計表

年度 \ 項目	書籍	簡訊	摺頁	期刊
2024	2	0	1	2
2023	2	1	0	2
2022	2	1	3	2
2021	2	1	3	2
2020	5	1	3	2



本館發行之《科技博物》期刊榮獲「熱門期刊傳播」五年引用獎（左）及長期引用獎（右）
The "Technology Museum Review" journal published by the Museum won the "Popular Journal Communication" Five-Year Citation Award (left) and Long-term Citation Award (right)

2. Publications: The journal "Taiwanese Journal for Studies of Science, Technology and Medicine," published by the Museum and serving as the publication of Taiwan STS Association, has become an important publication for research in the fields of science, technology and society since its first issue in March 2001. The "Technology Museum Review" journal published by the Museum once again won the "Popular Journal Communication Award (Five-Year Citation)" and "Popular Journal Communication Award (Long-term Citation)" in the Arts discipline at the "Taiwan Academic Resource Energy Profile Report Release Conference" held by the National Central Library in 2024. Statistics of publications over the past 5 years are shown in Table 5.

Table 5. Statistics of Publications Over the Past 5 Years

Year \ Items	Books	Newsletter	Brochure	Journal
2024	2	0	1	2
2023	2	1	0	2
2022	2	1	3	2
2021	2	1	3	2
2020	5	1	3	2



展示

2024 年持續辦理常設展廳更新，策辦自策特展、巡迴展及引進外界特展，為民眾提供多元展演活動；多功能大銀幕電影院調整以 2 部短片組合形式，同時推廣電影院場地租借服務，以提升營運效益。另推動下列創新作為：實施展示廳召集人制度、推動館藏品融入展示內容、於展廳開發實境解謎遊戲，積極活絡展示廳運作，豐富觀眾參觀經驗。

常設展示廳更新

每年透過策辦常設展示廳更新，為展示廳注入新活力，今年更以館藏品融入展示方式，有效提升本館展示及蒐藏研究專業量能。近 5 年展覽辦理場次與常設展示廳更新，如下表 1。

表 1 常設展示廳更新一覽表

項目 年度	常設展示廳更新	
	展廳全面更新	展廳部分更新
2024 年	0	4
2023 年	0	3
2022 年	1	5
2021 年	0	4
2020 年	0	7

1. SMART 智慧製造專區 - 產業機器人 / 動力機械廳

本館持續與上銀科技股份有限公司合作在動力機械廳設置「SMART 智慧製造專區」展示，於本 (2024) 年 3 月 20 日舉行 2.0 版展示開幕活動。



轉轉賽道
Spinning Track



半導體之旅 - 探索晶圓移載系統
Semiconductor Journey - Exploring Wafer Transfer Systems



工廠小幫手
Factory's Little Helper

Exhibitions

In 2024, we continued to update permanent exhibition halls, organize self-curated special exhibitions, traveling exhibitions, and introduced external special exhibitions to provide diverse exhibition activities for the public. The multi-functional 3D theater was adjusted to a two-short-film combination format while promoting theater venue rental services to enhance operational effectiveness. Additionally, we implemented the following innovations: implementing an exhibition hall convener system, incorporating museum collections into exhibition content, and developing reality puzzle games in exhibition halls, actively energizing exhibition hall operations and enriching visitor experiences.

Exhibition Hall Updates

Through annual updates of permanent exhibition halls, we inject new vitality into the exhibitions. This year, we particularly focused on incorporating museum collections into displays, effectively enhancing our exhibition and collection research professional capabilities. The number of exhibitions and permanent exhibition hall updates over the past 5 years are shown in Table 1 .

Table 1. Overview of Permanent Exhibition Hall Updates

Items Year	Exhibition Hall Updates	
	Complete Hall Updates	Partial Hall Updates
2024	0	4
2023	0	3
2022	1	5
2021	0	4
2020	0	7

1.Power and Machines Hall : SMART Intelligent Manufacturing Zone - Industrial Robots

The Museum continues to collaborate with HIWIN Technologies Corporation to set up the "SMART Intelligent Manufacturing Zone" exhibition in the Power and Machines Hall, held the opening ceremony for version 2.0 on March 20, 2024.

2. 未來交通站、高雄輕旅行、海巡艦艇遊 / 交通夢想廳

交通夢想廳新增「未來交通站」、「高雄輕旅行」及「海巡艦艇遊」等三個單元，為展場注入前瞻新內容。



高雄輕軌模擬駕駛
Kaohsiung Light Rail
Simulation Driving

3. HOPE 國寶虛實融合互動展示案、2024 諾貝爾獎得獎專區 / 科學桂冠廳

諾貝爾獎是全球知名的獎項。本館典藏之國寶 HOPE，由李遠哲院士設計開發，成為世界上第一台通用型交叉分子束儀器，並因而榮獲 1986 年諾貝爾化學獎。



2024 諾貝爾獎得獎專區更新內容
2024 Nobel Prize Winners Section

2. Pavilion of Dream Transport: Future Transportation Station, Kaohsiung Light Rail, and Coast Guard Adventure

Pavilion of Dream Transport added three new units: "Future Transportation Station," "Kaohsiung Light Rail on the go," and "Coast Guard Adventure," injecting prospective contents into the exhibition space.



艦艇模擬駕駛體驗
Vessel Simulation Driving



未來交通站 - 太空飛機與真空管道列車
Future Transportation Station - Spaceplane and Hyperloop

3. Science Laureates: Interactive Exhibition for National Treasure- HOPE, 2024 Nobel Prize Winners Section

The Nobel Prize is a globally renowned award. The Museum's national treasure HOPE, designed and developed by Academician Yuan-Tseh Lee, became the world's first universal crossed molecular beam apparatus, which led to the 1986 Nobel Prize in Chemistry.



學生體驗虛實互動
Students Experienced the Interactive
Exhibition of HOPE



臺灣第一件科技文物國寶融入互動展示
Taiwan's First Technological National Treasure
Integrated into Interactive Exhibition Unit

特展策辦

今年推出 2 檔自策特展、引進 5 檔外界合作特展，辦理 8 檔巡迴特展。

1. 自策特展

(1) X 疾病 - 新興傳染病巡迴展

本展覽由本館與國家衛生研究院共同主辦，透過互動操作引導觀眾探究人類、自然界與疾病之間的複雜關係。



觀眾體驗洗手七式互動單元
Visitors Experienced Seven Steps of Hand Washing



觀眾體驗自我防護的方法互動單元
Visitors Experienced "Protect Yourself From Communicable Diseases Interactive Unit"

(2) 星動時刻·量測傳說—量測萬物與星座的探索之旅

集結 70 種古今珍稀儀器，透過希臘神話與 12 星座展示故事線，搭配多媒體互動以及任務導向，探索量測科技之旅。



與 12 天神合影拍照
Taking Photos with 12 Gods



認識大地測量之經緯
Understanding the Geodetic Survey

Special Exhibitions

This year, we launched 2 self-curated special exhibitions, introduced 5 external collaborative exhibitions, and organized 8 traveling exhibitions.

1. Self-curated Special Exhibitions

(1) X Disease - Emerging Infectious Disease Tour Exhibition

This exhibition was co-organized by the Museum and the National Health Research Institutes, guided visitors to explore the complex relationships between humans, nature, and diseases through interactive operations.



觀眾體驗預測未來互動單元

Visitors Experienced Antibiotic Resistance Interactive Unit

(2) Measuring Technology Exhibition

Gathering 70 rare ancient and modern instruments, through Greek mythology and 12 constellation exhibition storylines, combined with multimedia interaction and mission-oriented approach to explore the journey of measurement technology.



度量衡單元看看你的身高

Weights and Measures Unit : Check Your Height

2. 合作特展

透過引進外界多樣主題特展，有效利用本館空間，豐富民眾參觀經驗。



印象派 150 週年光影藝術展 - 高雄站
150th Anniversary of Impressionism Light and Shadow Art Exhibition - Kaohsiung

表 2 2024 年本館館內特展一覽表

展覽名稱	展覽日期	展覽地點
X 疾病 - 新興傳染病巡迴展	2024.06.12-2024.12.15	圓形館中庭 (B1)
星動時刻・量測傳說—量測萬物與星座的探索之旅	2024.10.31-2025.09.01	六樓三方館
卡娜赫拉的小動物 荒唐世界博物館 高雄站	2023.12.29-2024.03.03	第二、三特展廳 (2F)
光影魔法美術館	2023.12.29-2024.03.03	第一、第二特展廳 (2F)
彩虹童畫親子樂園	2024.09.05-2027.08.31	第四特展廳 (B1)
魔獸世界 - 地心冒險之旅	2024.08.23-2024.09.22	一樓、地下一樓
印象派光影藝術展	2024.12.28-2025.04.06	第一、第二特展廳 (2F)

2. Collaborative Exhibitions

Through introducing various themed special exhibitions from external sources, we effectively utilize museum space and enrich visitor experiences.



卡娜赫拉的小動物 荒唐世界博物館 高雄站
Kanahei's Small Animals - Absurd World
Museum: Kaohsiung



魔獸世界 - 地心冒險之旅
World of Warcraft-The Adventure Within



彩虹童畫親子樂園
Rainbow Children's Art Paradise



光影魔法美術館
Magic Light and Shadow Art Museum

Table 2. Overview of Museum Special Exhibitions in 2024

Exhibition Name	Exhibition Date	Location
X Disease - Emerging Infectious Disease Tour Exhibition	2024.06.12-2024.12.15	Circular Hall Atrium (B1F)
Measuring Technology Exhibition	2024.10.31-2025.09.01	Triple Square Building (6F)
Kanahei's Small Animals - Absurd World Museum: Kaohsiung	2023.12.29-2024.03.03	2nd & 3rd Special Exhibition Gallery (2F)
Magic Light and Shadow Art Museum	2023.12.29-2024.03.03	1st & 2nd Special Exhibition Gallery (2F)
Rainbow Children's Art Paradise	2024.09.05-2027.08.31	4th Special Exhibition Gallery (B1F)
World of Warcraft-The Adventure Within	2024.08.23-2024.09.22	1F and B1F
Impressionism Light and Shadow Art Exhibition	2024.12.28-2025.04.06	1st & 2nd Special Exhibition Gallery (2F)

3. 巡迴特展

本館數檔自策特展至國內外各地巡迴展出，擴大展覽效益。



機構木偶奇遇記特展移展財團法人豐泰文教基金會
"Automata" Special Exhibition at Feng Tay Cultural and Educational Foundation



「島嶼關鍵字 - 水保防災起步走」巡迴展移展溪頭福華渡假飯店
"Island Keywords: Soil & Water Conservation for Disaster Prevention at Howard Resort Xitou

表 3 2024 年本館館外巡迴特展一覽表

展覽名稱	展覽日期	展覽地點
機構木偶奇遇記特展	2024.04.27-2024.09.21	財團法人豐泰文教基金會
黏 TT 工廠事件簿 - 黏的體驗與科學特展	2024.10.01-2025.08.31	國立臺灣科學教育館三樓特展廳
潛行探索臺灣 - 水下文化資產特展	2023.10.20-2025.06.29	臺中文化部文化資產園區 R08 展館
防疫戰鬥營巡迴展	2023.10.08-2024.07.31	馬來西亞雪隆、馬六甲麻坡等地靜思堂
「島嶼關鍵字 - 水保防災起步走」巡迴展	2024.01.11-2025.02.10	南投農村水保署、雲林官邸兒童館、溪頭福華渡假飯店、高雄市加昌國小
瘋狂科學家 - 趣味科學特展	2023.12.09-2024.04.15 2024.06.15-2024.11.17	慈濟彰化靜思堂、慈濟安平聯絡處
人體內的縮小軍 - 創新生醫特展	2024.06.29-2024.10.06	松山奉天宮
人造關係 - 開箱：傳播科技特展	2024.10.09-2025.02.10	慈濟臺中東大靜思堂

3. Traveling Exhibitions

Several of our self-curated special exhibitions traveled to various locations domestically and internationally, expanding exhibition benefits.



人體內的縮小軍特展移展台北松山奉天宮
Fantastic Army in Human Body Special Exhibition moved to Taipei Songshan Fengtian Temple



防疫戰鬥營巡迴展移展馬來西亞
Diseases Prevention Combat Camp moved to Jing Si Hall in Malacca, Malaysia



瘋狂科學家特展移展彰化靜思堂
Eureka! The Fun Science Zone at Changhua Jing Si Hall

Table 2. Overview of Museum Special Exhibitions in 2024

Exhibition Name	Exhibition Date	Exhibition Location
"Automata" Special Exhibition	2024.04.27-2024.09.21	Feng Tay Cultural and Educational Foundation
Sticky Factory	2024.10.01-2025.08.31	3F Special Exhibition Hall at the National Taiwan Science Education Center
Diving Deep: An Exploration Of Taiwan's Underwater Heritage Taichung Exhibition	2023.10.20-2025.06.29	R08 Exhibition Hall of Cultural Heritage Park, Taichung
Diseases Prevention Combat Camp	2023.10.08-2024.07.31	Tzu Chi Jing Si Halls in Kuala Lumpur, Malacca and Muar, Malaysia
Island Keywords: Soil & Water Conservation for Disaster Prevention	2024.01-11-2025.02.10	Agency of Rural Development and Soil and Water Conservation of MOA Nantou, Yunlin County Magistrate Children's Club, Howard Resort Xitou and Kaohsiung Jiachang Elementary School.
Eureka! The Fun Science Zone	2023.12.09-2024.04.15 2024.06.15-2024.11.17	Tzu Chi Changhua Jing Si Hall Tzu Chi Anping Liaison Office
Fantastic Army in Human Body Special Exhibition	2024.06.29-2024.10.06	Songshan Fengtian Temple
Artificial Relationships - Unboxing: Communication Technology Exhibition	2024.10.09-2025.02.10	Tzu Chi Taichung Tungda Jing Si Hall

多功能大銀幕電影院

為提供更超值的觀影體驗，自 2024 年 7 月 1 日起，電影放映場次調整為每場提供 2 部短片組合方式，每小時 1 場，平日 6 場、假日 7 場，同時增加提供團體預約場次，更適合學校團體教學行程安排，也方便散客及假日家庭觀眾安排觀賞時間。另為增益本館營運收入，電影院另由公共服務組推廣租借場地辦理活動，全年共租借予外界企業或團體 56 場。



多功能大銀幕電影院租借場地服務
Multi-functional 3D Theater Rental Service: 26-meter depth, 19-meter height/ 6-story high screen/ 300 seats
Special lectures, global video conferences/ Music performances, achievement presentations/ Film screenings
Special exhibition afternoon tea, exhibition nights/ VIP lounge

設置展示廳召集人制度，強化展示廳各項功能

為有效整合應用展示資源，設置展示廳召集人制度，成立各展示廳工作小組，爭取內外部資源及經費，進行展示更新、蒐藏研究及辦理科教活動；並將典藏文物融入對應主題展廳，結合實境解謎遊戲等創新方式，強化展示廳各項功能，提供民眾更優質且豐富的參觀體驗。今年共爭取 1,466 萬元經費挹注 6 個展廳更新案，推出 3 檔實境解謎遊戲及辦理 727 場科教活動，共吸引 28,629 人次參加。



台灣工業史蹟廳實境解謎活動 - 達達斯雀的六封信
The Reality Puzzle Game at Taiwan Industrial Heritage Hall - Six Letters of Industry



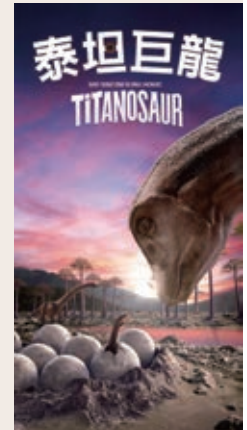
莫拉克風災紀念廳活動 - 追尋希望之光 博物館實境解謎之旅
Morakot Typhoon Memorial Hall Activity - Pursuing the Light of Hope: Museum Reality Puzzle Journey

Multifunctional 3D Theater

To provide a more valuable viewing experience, starting July 1, 2024, film screenings were adjusted to offer 2 short films per showing for one hour, 6 showings on weekdays and 7 on holidays. Group reservation sessions were also added for better to accommodate school group teaching schedules. And it's more convenient for individual visitors and family audiences to plan their viewing times in holidays. In order to increase museum operating income, the theater is promoted by using venue rental for events by the Public Service Section, with a total of 56 rentals to external businesses or groups throughout the year.



北極圈保衛戰
SAVING SANTA 3D



泰坦巨龍
TITANOSAUR

Implemented Exhibition Convener System to Enhance Multi Functions for Exhibition Hall

To effectively integrate and utilize exhibition resources, we established an exhibition hall convener system, forming working groups for each exhibition hall to secure internal and external resources and funding for exhibition updates, collection research, and science education activities. We also incorporated collection artifacts into corresponding themed exhibition halls, combined with innovative approaches like reality puzzle games, to enhance exhibition hall functions and provide visitors with superior and enriching experiences. This year, we secured 14.66 million NT dollars in funding for 6 exhibition hall update projects, launched 3 reality puzzle games, and organized 727 science education activities, attracted 28,629 participants.



觀眾體驗「追尋希望之光 博物館實境解謎之旅」
Visitors experiencing "Pursuing the Light of Hope: Museum Reality Puzzle Game"



民眾參加台灣工業史蹟廳「茵達斯崔的六封信」實境解謎活動
Visitors Participated in the Reality Puzzle Game of "Six Letters of Industry"

科技教育

本館結合各項資源並善用博物館設施，針對全齡族群辦理一系列寓教於樂的科普與科學課程、講座，並開發互動性教材教具，透過多元的學習體驗提升大眾科技素養。

多元科學營隊活動

1. 冬夏令營

為推廣生動科學教育及充實學童寒暑假生活，於寒暑假期間開辦科學營隊活動，讓學員在趣味中體驗科學。

2. 週末課程活動

為培養學童基礎科學知識與素養，整合本館展廳資源，於假日期間辦理多元主題科教活動，藉此探索科學的奧妙。



冬令營 - 從牙齒認識動物
Winter Camp - Understanding Animals
Through Teeth



交通夢想廳假日展廳活動
Holiday Exhibition Activities
at the Pavilion of Dream
Transport

3. 學校團體校外教學

本館以 108 新課綱「自發、互動與共好」核心素養為基礎，規劃設計適合各級學校學生團體於平日到館參加的教學活動，讓學生動手做並培養其創意思考、互動合作、互惠共好的學習態度。課程主題包含光學、力學、環境教育等。

Science and Technology Education

The Museum combines various resources and utilizes museum facilities to organize a series of educational and entertaining popular science and science courses and lectures for all age groups, and develops interactive teaching materials and aids to enhance public technological literacy through diverse learning experiences.

Diverse Science Camp Activities

1. Winter and Summer Camps

To promote lively science education and enrich children's winter and summer vacations, we organize science camp activities during these periods, enabling participants to experience science through fun activities.

2. Weekend Course Activities

To cultivate children's basic scientific knowledge and literacy, we integrate museum exhibition hall resources to organize diverse themed science education activities during holidays to explore the wonders of science.



夏令營 - 科學小廚師
Summer Camp - Little Science Chef

3. School Group Field Trips

Based on the 108 Curriculum Guidelines' core competencies of "Initiative, Interaction, and Common Good," the Museum plans and designs teaching activities suitable for student groups from various school levels to participate on weekdays, enabling students to learn hands-on while cultivating creative thinking, interactive cooperation, and mutually beneficial learning attitudes. Course themes include optics, mechanics, environmental education, etc.

4. 科工創藝生活學堂

為落實全齡化教育及終身學習，規劃休閒才藝為主軸的課程，提供成人及中高齡者輕鬆愉快的學習主題與環境。課程內容包含二胡、電烙畫及空靈鼓等項目，並著重藝術與創意手作。



學校團體校外教學活動
School Group Field Trip Activities

5. 創客工場

本館積極落實 STEAM 教育理念，2024 年開始辦理夜間創客課程及體驗活動。鼓勵自造者的創意發想，並有助本館開發全齡客層。



水陸兩用氣動船實作
Land and Water Air-aActivitpowered Boat Implementation

表 1. 近 5 年推廣教育活動場次表

年度 \ 活動	冬令營	夏令營	週末課程	校外教學	創客工場
2024	68	119	232	182	224
2023	68	122	170	159	120
2022	---	97	123	175	153
2021	74	---	89	178	140
2020	36	103	82	151	128

(註：2021 夏令營、2022 冬令營因 Covid-19 疫情停辦)

表 2. 近 5 年推廣教育活動人次表

年度 \ 活動	冬令營	夏令營	週末課程	校外教學	創客工場
2024	1,667	3,272	2,909	7,766	3,367
2023	1,417	3,179	1,970	6,193	1,330
2022	---	2,235	1,701	9,746	1,224
2021	1,695	---	1,541	8,039	1,120
2020	689	2,785	1,309	6,426	1,024

(註：2021 夏令營、2022 冬令營因 Covid-19 疫情停辦)

4. NSTM Creative Arts & Crafts Learning Series

To implement lifelong learning and education for all ages, we plan leisure and artistic skill-based courses, providing adults and middle-aged/elderly individuals with relaxing and enjoyable learning topics and environment. Course themes include erhu, pyrography, and tongue drum, emphasizing art and creative handicrafts.



科工創藝生活學堂二胡課程
NSTM Creative Arts Living Academy Erhu Course

5. Maker Space

The Museum actively implements STEAM education concepts, beginning to offer evening maker courses and experience activities in 2024. Encouraging makers' creative ideas helps the Museum develop all-age clientele.



梭織機實作
Loom Implementation

Table 1. Statistics of Educational Promotion Activities Over the Past 5 Years

Year \ Items	Winter Camp	Summer Camp	Weekend Courses	Field Trips	Maker Space
2024	68	119	232	182	224
2023	68	122	170	159	120
2022	---	97	123	175	153
2021	74	---	89	178	140
2020	36	103	82	151	128

(Note: 2021 Summer Camp and 2022 Winter Camp were cancelled due to the Covid-19 pandemic)

Table 2. Statistics of Educational Promotion Activity Participants Over the Past 5 Years

Year \ Items	Winter Camp	Summer Camp	Weekend Courses	Field Trips	Maker Space
2024	1,667	3,272	2,909	7,766	3,367
2023	1,417	3,179	1,970	6,193	1,330
2022	---	2,235	1,701	9,746	1,224
2021	1,695	---	1,541	8,039	1,120
2020	689	2,785	1,309	6,426	1,024

(Note: 2021 Summer Camp and 2022 Winter Camp were cancelled due to the Covid-19 pandemic)

6. 環境教育推廣活動

本館 2024 年續獲得評鑑為優良等級之環境教育設施機構，環境教育活動包含「綠博探索 - 樂活節能屋導覽及體驗」、「氣候變遷展示廳探索」、「節能環境教育課程」、「校園節能學習闖關」等。

節能屋環境教育課程活動
Energy-saving House Environmental
Education Course Activity

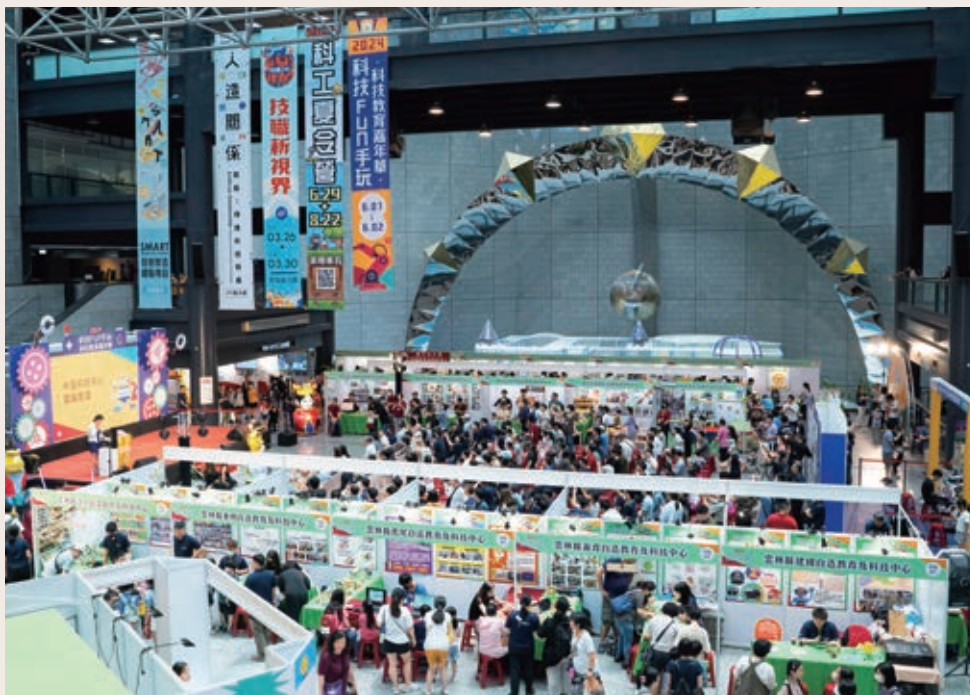


大型競賽暨講座

1. 科技教育創意實作競賽暨計畫成果展示

「科技教育創意實作競賽」由國小及國中組別分別設「資訊科技組」及「科技任務組」，合計 157 隊報名參賽，評選出 44 隊優秀隊伍。

「科技 Fun 手玩 - 科技教育嘉年華」活動包含全國 100 間科技中心年度成果及體驗攤位、8 場科技小學堂、2 場科技論壇與 4 組競賽金牌作品展示，活動吸引 24,330 人次參與。



科技 FUN 手玩 - 科技教育嘉年華活動
Technology is So FUN Technology
Education Carnival

6. Environmental Education Promotion Activities

In 2024, the Museum continued to be evaluated as an excellent environmental education facility.

Environmental education activities included "Green Exploration - Energy-Saving House Tour and Experience," "Climate Change Exhibition Hall Exploration," "Energy Conservation Environmental Education Course," and "Campus Energy Conservation Learning Challenge."



嘉義縣柳林國小參與環教課

Chiayi County Liulin Elementary School participating in environmental education course;

Large-scale Competitions and Lectures

1. Creative Technology Education Contest and Exhibition

The "Creative Technology Education Contest" included the "Information Technology Group" and "Technology Mission Group" for elementary and junior high school divisions, with 157 teams registered and 44 outstanding teams selected.

The "Technology is So Fun – Technology Education Carnival" activity included annual achievements and experience booths from 100 national technology centers, 8 technology workshops, 2 technology forums, and 4 gold metal work displays, attracting 24,330 participants.



112 學年度科技教育創意實作競賽頒獎典禮
Creative Technology Education Contest
Award Ceremony

2. 永續能源創意實作競賽及成果展示

為推廣能源教育政策，本館與教育部永續能源跨域應用人才培育計畫辦公室合辦「臺灣能-永續能源創意實作競賽」，全國大專生、高中職及國中生以「能源」為主題製作作品參賽，吸引 2,500 位師生組隊報名。成果展展出內容包含能源聯盟中心及能源教育資源中心成果、競賽得獎作品、互動教具與體驗活動。



永續能源競賽 - 高中職短片金牌
Sustainable Energy Innovation
Contest - High School Video
Gold Medal

3. 第 14 屆全國手擲機飛行競賽

為紀念人類飛行歷史及推廣航太科學知識，本館 2024 年續辦「手擲機飛行」國中組競賽活動，共 110 組報名。競賽活動分為「直線飛行」、「滯空飛行」2 項，將創意思考及飛行科學原理融入競賽中，以訓練學生設計、思考、及解決問題能力。



手擲機設計製作
Hand-launched Aircraft Flight
Competition

2. Sustainable Energy Innovation Contest and Exhibition

To promote energy education policy, NSTM collaborated with the Ministry of Education's Sustainable Energy Cross-domain Application Talent Cultivation Program Office to organize the "Taiwan Energy - Sustainable Energy Innovation Contest." College, high school, and junior high school students nationwide participated with energy-themed works, attracting 2,500 teachers and students to form teams. The achievement exhibition included results from the Energy Alliance Center and Energy Education Resource Center, Hand-competition winning works, interactive teaching aids, and experience activities.



永續能源創意實作競賽
Sustainable Energy Innovation Contest

3. 14th National Hand-launched Aircraft Flight Competition

To commemorate human flight history and promote aerospace science knowledge, the Museum continued to organize the "Hand-launched Aircraft Flight" junior high school division competition in 2024, with 110 teams registered. The competition was divided into "Straight Flight" and "Hovering Flight" categories, integrating creative thinking and flight science principles to train students' design, thinking, and problem-solving abilities.



手擲機飛行競賽
Hand-launched Aircraft Design and Production

4. 2023-2024 First 機器人大賽台灣選拔賽

競賽主題以「藝術」為主軸，比賽以趣味方式透過學生團隊合作進行得分任務，包含「戲劇場景轉換」、「3D 電影」、「沉浸式體驗」、「擴增實境裝置」、「混音器」等藝術挑戰。競賽共計 184 支隊伍，1,500 位選手及教練參與。



Discover 競賽
Discover Competition

5. 第 22 屆週日閱讀科學大師系列講座

本館與國立成功大學共同主辦國家科學委員會科普講座，包含科學與人文、社會科學、太空科學、AI、生醫及生活科技等多面向主題，吸引民眾參加，2024 年共計辦理 16 場次，2,976 人次參與。



第 22 屆週日閱讀科學大師講座 - 首場
22nd Reading the Science Master on
Sunday Lecture Series

6. 第 12 屆索尼創意科學大賞 - 玩具成果展 (高雄場)

本館與台灣索尼股份有限公司合作辦理成果展，本屆競賽以「夢想玩具樂園」為主題，藉由小朋友最感興趣的玩具或遊樂園，充分發揮天馬行空的想像力來設計屬於自己的玩具，4 天的展期共計 7,981 人次參觀。



本屆成果展開幕記者會
This Year's Achievement Exhibition
Opening Press Conference

4. 2023~2024 FIRST Taiwan Regional Tournament



FLL 競賽
FLL Competitoin

The competition theme centered around "Art," with student teams collaborating to earn points through engaging challenges such as "Theater Scene Transition," "3D Movie," "Immersive Experience," "Augmented Reality Installation," and "Mixer" artistic challenges. A total of 184 teams participated, with 1,500 contestants and coaches.

5. 22nd Reading the Science Master on Sunday Lecture Series

We held the "22nd Reading the Science Master on Sunday Lecture Series" is subsidized by the National Science and Technology Council with National Cheng Kung University. The themes of lectures cover science and humanities, social sciences, space science, AI, biomedicine, and life technology, attracting public participation and enhancing public scientific literacy. In 2024, there was a total of 16 lectures, with 2,976 participants.

6. 12th Sony Creative Science Award - Toy Achievement Exhibition (Kaohsiung Venue)

The Museum collaborated with Sony Taiwan Co., Ltd. to organize the achievement exhibition. This year's competition theme is "Dream Toy Paradise," encouraging children to fully exercise their imagination in designing their own toys based on their favorite toys or amusement parks. A total of 7,981 participants in the 4-day exhibition.



展區親子參與
Parent-child Participation in Exhibition Area

教材教具研發推廣

1. 專利「迷宮盒」

本館 2022 年開發「科學魔方」作為國立社教機構及文化機構聯合行銷宣導品，並以其核心設計概念及技術於 2024 年取得中華民國設計專利。



迷宮盒
Maze Box



迷宮盒專利證書
Maze Box Patent Certificate

2. 「海巡艦艇遊」及「水下無人載具的奇幻之旅」互動體驗教具

本館開發「海巡艦艇遊」互動教具，以海巡署艦艇為設計造型，藉由體驗掌舵，引導觀眾認識海洋航行與生態永續重要性。「水下無人載具的奇幻之旅」為移動式互動教材，民眾扮演水下無人載具的操作者，透過遠端控制進行水下攝影、深海探測、採集等任務。



海巡艦艇遊
Coast Guard Adventure

3. 科學教育資源推廣教材

本館應用博物館資源進行科學教育推廣，本年度執行成果包含：於新竹縣、彰化縣、台東縣、台中市、桃園市等地辦理 9 場次教師研習，計 253 名教師參與；教學包推廣 300 班，並推動偏鄉國小科學教材，計有雲林縣、高雄市、台南市、宜蘭縣、南投縣之 43 所學校申請參與。



偏鄉社區科學教材推廣活動
Rural Community Science Material Promotion Activity

Teaching Materials and Aids Development and Promotion

1. "Maze Box" Patent

The "Science Cube" developed by the Museum in 2022 served as joint marketing promotional material for national social education and cultural institutions. Its core design concept and technology later received ROC design patent in 2024.

2. "Coast Guard Adventure" and "Fantasy Journey of Underwater Unmanned Vehicle" Interactive Teaching Aids

NSTM developed the "Coast Guard Adventure" interactive teaching aid, designed based on Coast Guard Administration vessels, guiding visitors to understand the importance of marine navigation and ecological sustainability through steering experience. "Fantasy Journey of Underwater Unmanned Vehicle" is a mobile interactive teaching material where visitors play the role of underwater unmanned vehicle operators, performing



underwater photography, deep-sea detection, and collection missions through remote control.

水下無人載具的奇幻之旅

Fantasy Journey of Underwater Unmanned Vehicle

3. Science Education Resource Promotion Materials

The Museum utilized museum resources for science education promotion. This year's implementation results include organizing 9 teacher workshops in Hsinchu County, Changhua County, Taitung County, Taichung City, and Taoyuan City, with 253 teachers participating, and offering teaching resource packages for 300 classes. In addition, a total of 43 schools from remote areas such as Yunlin County, Kaohsiung City, Tainan City, Yilan County, and Nantou County applied for the packages of our science teaching aids.

4. 創客教學材料包

為推動創客教育，本館自行開發抓不到的毛線球、分隔動畫機、月球探勘車、月兔搗米雙動版（棘輪擒縱機構）、月兔搗米單動版（凸輪彈簧機構）等 5 項創新材料包作為教學資源。



月兔搗米單 / 雙動版
Moon Rabbit Rice Pounding Single/
Double Action Version

其他重要績效

1. 臺灣科學節

「臺灣科學節」由教育部及國家科學及技術委員會共同主辦，教育部所屬五大科學館承辦，2022 至 2025 年並由本館負責統籌。2024 年第五屆臺灣科學節以「信任科學，邁向永續」為主題，本館配合推出科普戲劇、科普市集、食農教育創意教具市集、海洋教育嘉年華、創客趴、科普閱讀、工作坊等多元活動。總計辦理 382 場，吸引累計 10 萬 4,178 參與人次，讓觀眾體驗科學的趣味與博物館的活力。

2. 2024 全國科普論壇

以「科普賦能-信任科學，邁向永續」為主題，透過「館長論壇」、「專題演講」及「論文發表」等學術研究與實務推廣成果進行分享交流，共發表 90 篇論文，250 位公私立博物館、社教機構與各級學校普教育人士參與。



2024 全國科普論壇
2024 National Science Popularization Forum

4. Maker Teaching Material Kits

To promote maker education, the Museum independently developed 5 innovative material kits as teaching resources: Uncatchable Yarn Ball, Separated Animation Machine, Lunar Rover, Double-action Moon Rabbit Rice Pounding (Ratchet and Pawl Mechanism), and Single-action Moon Rabbit Rice Pounding (Cam and Spring Mechanism).

Other Important Achievements

1. Taiwan Science Festival

The "Taiwan Science Festival" jointly organized by the Ministry of Education and the National Science and Technology Council, implemented by five major science museums under the Ministry of Education, with the Museum responsible for coordination from 2022 to 2025. The 2024 5th Taiwan Science Festival is themed "Trust Science, Proceed to Sustainability." The Museum launched diverse activities including science popularization activities, Science Drama, Science Fair, food and agriculture education creative teaching aid markets, marine education carnival, maker party, science reading, and workshops. A total of 382 sessions were held, attracting a cumulative 104,178 participants, enabling visitors to experience the fun of science and museum vitality.

2. 2024 National Science Popularization Forum

We held the "2024 National Science Popularization Forum " is subsidized by the Ministry of Education on September 26-27. Themed "Science Popularization Empowerment - Trust Science, Move Towards Sustainability," shared and exchanged academic research and practical promotion results through "Museum Directors Forum," "Keynote Speech," and "Paper Presentations," with 90 papers presented and 250 participants from public and private museums, social education institutions, and school education personnel.

3. 高雄市國民中小學科學展覽暨科學園遊會

本館與高雄市政府教育局共同主辦的活動，藉由科學展覽發揮實驗教學功能，並建立學生科學概念、態度及方法。科學園遊會由學校於本館設置趣味科學攤位，期增進國民中小學生科學素養，2024 年計 48,000 人次參與。

第 64 屆高雄市國民中小學科學展覽典禮
The 64th Kaohsiung City Elementary and
Middle School Science Exhibition Ceremony



4. 海洋教育巡迴推廣

為推廣海洋教育，與海洋委員會共同於屏東、高雄及宜蘭辦理「海洋教育嘉年華」、「走出教室・遇見海洋」、「海洋防衛探索營」及「海洋有愛之旅」等活動，共計 20,137 人次參與。



海洋防衛探索營
Marine Defense Explorer Camp

3. The Kaohsiung Primary and Junior High School Science Fair and Exhibition

Co-organized with the Education Bureau of Kaohsiung City Government, the activity utilizes science exhibitions to implement experimental teaching functions and establish students' scientific concepts, attitudes, and methods. The science fair set up fun science booths at the Museum to enhance elementary and junior high school students' scientific literacy. A total of 48,000 participants in 2024.



第 43 屆高雄市國民中小學科學園遊會開幕典禮
43rd Kaohsiung Primary and Junior High School Science Fair Opening Ceremony

2. Marine Education Touring Exhibition

To promote marine education, we collaborated with the Ocean Affairs Council to organize "Marine Education Carnival," "Step Out of the Classroom, Meet the Ocean," "Marine Defense Explorer Camp," and "Ocean Love Journey" activities in Pingtung, Kaohsiung, and Yilan, with a total of 20,137 participants.



海洋教育嘉年華屏東場
Marine Education Carnival in Pingtung

公共服務

公共服務組掌管公關行銷、觀眾服務、導覽解說、社區關係發展、志工管理、文創商品營運等公共服務之規劃、研究、執行及推廣等事項。

服務績效

1. 服務人次

2024 年度總服務人次共計 239 萬 6,496 人。

表 1. 近 5 年服務人次統計表

年度	進館參觀人次	總服務人次
2024	1,847,205	2,396,496
2023	1,704,674	2,581,374
2022	1,423,285	2,027,927
2021	868,969	1,329,033
2020	1,214,165	2,427,156

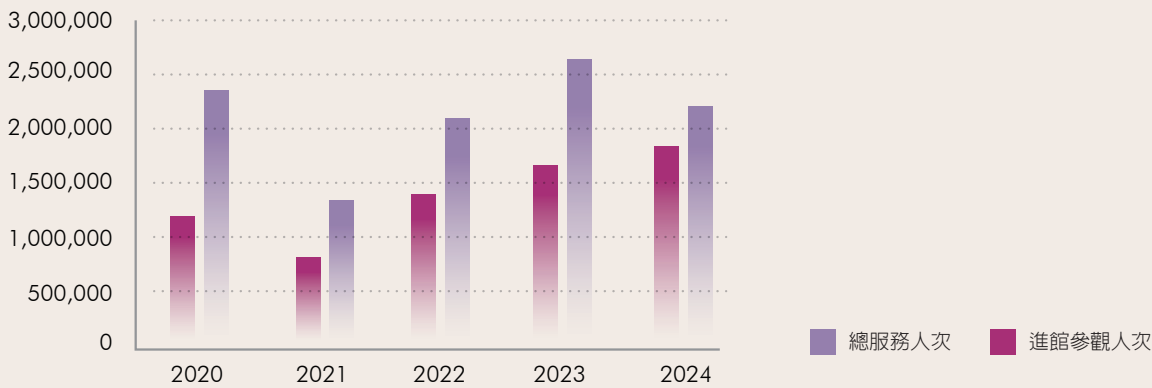


圖 1 近 5 年服務人次比較圖

Visitor Services

The Visitor Services Division manages public relations marketing, visitor services, guided tours, community relationship development, volunteer management, cultural and creative product operations, and other public service planning, research, implementation, and promotion matters.

1. Service Performance

2024 total service participants reached 2,396,496.

Table 1. Statistics of Service Participants Over the Past 5 Years

Year	Museum Visitors	Total Service Participants
2024	1,847,205	2,396,496
2023	1,704,674	2,581,374
2022	1,423,285	2,027,927
2021	868,969	1,329,033
2020	1,214,165	2,427,156

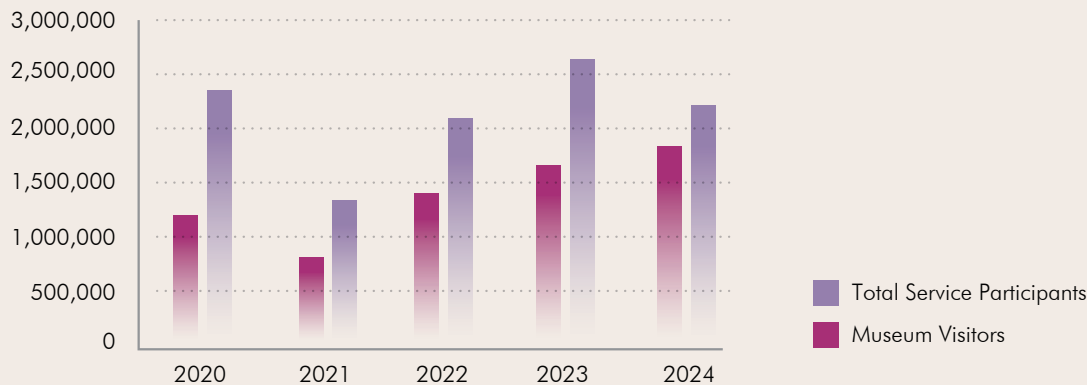


Image 1. Comparison of Service Participants Over Past 5 Years

2. 場地多元利用

(1) 企業親子日客製化服務內容

2024 年起科工館與企業進行異業合作，打造客製化親子日活動，提高來館人數及營運效益，親子日收益共 219 萬 9,279 元。

王品集團企業親子日活動
WowPrime Group Corporate
Family Day Activity



(2) 多元場地租借方案

本館擁有環境舒適及設備齊全的各式場地，於營運許可下，供公私立機構團體、公司行號或個人舉辦活動。2024 年南館場地借出 2,960 次、北館場地借出 342 次、多功能電影院借出 56 場，並創造場地費收入共計 1,409 萬 7,572 元。



親子日活動之戶外市集
Family Day Activity: Outdoor Market

1. Diverse Venue Utilization

(1) Customized Services for Corporate Family Day

Starting from 2024, the NSTM collaborated with businesses for cross-industry cooperation, creating customized family day activities to increase visitor numbers and operational effectiveness, with family day revenue totaling NT\$2,199,279.

(2) Diverse Venue Rental Options

The NSTM has various comfortable venues with complete facilities, available under operational permissions for activities by public and private institutions, companies, or individuals. In 2024, South Complex venues were rented 2,960 times, North Complex venues 342 times, and Multifunctional 3D Theater 56 times, generating a venue rental income of NT\$14,097,572.



3. 導覽解說服務

本館提供多元導覽服務，包括團體預約導覽、主動式導覽及針對不同特展與展示廳規劃的「定時定點導覽」服務、雙語導覽活動及結合實境闖關和科學 DIY 導覽活動等。2024 年度提供 3,354 場導覽，服務 52,738 人次。



雙語導覽活動
Bilingual Guided Tour Activities

4. 餐飲及賣店服務

位置	名稱	服務內容簡介
北館 5F	五樓用餐區	設有美食販賣機及用餐座位
北館 2F	咖啡藝廊唯客多	提供咖啡、西式簡餐
北館 1F	易奇趣	販售紀念品及科學教材
	自助休息區	設有飲料販賣機及用餐座位
北館 B1	天沁食府	臺式合菜餐廳
	公仔壽司	日式定食及壽司
南館	科普咖啡站	咖啡廳

3. Guided Tour Services

The Museum provides diverse guided tour services, including group reservation tours, active guided tours, “selected exhibits tours and fixed time guided tours” , bilingual guided tours, and guided tour activities combining reality challenges and science DIY. In 2024, 3,354 guided tours were provided, serving 52,738 participants.

4. Food and Retail Services

Location	Name	Service Description
North Complex 5F	Fifth Floor Lunch Box and Activities Area	Food vending machines and dining seats
North Complex 2F	Art Café	Coffee and Western light meals
North Complex 1F	Chow Chow Shop	Souvenirs and science teaching materials
	Self-service Rest Area	Beverage vending machines and dining seats
North Complex B1	Tian Cin Restaurant	Taiwanese set meals
	Figurine Sushi	Japanese set meals and sushi
South Complex	Science Popular Coffee Station	Café



咖啡藝廊唯客多
Art Café



易奇趣商店
Chow Chow Shop

媒體宣傳

1. 網路社群，精準行銷

因應 5G 行動網路及 AI 世代崛起，本館積極貼近觀眾行動載具使用習慣及網路社群演算法，用心經營社群媒體貼文、短影音、限時動態等分眾宣傳通路。截至 10 月 30 日 Facebook 粉絲計有 133,601 人、觸及人數達 280.4 萬；Instagram 計有 4,800 人、觸及人數達 14.8 萬；Google Maps 觀眾評論達 23,403 則，平均 4.5 星高分（滿分 5 星）。

2. 媒體互動，數據分析

定期統計分析「新聞輿情」，制定當年度各季新聞策略與關鍵績效指標 (KPI)，亮點分配、分散報導，優化展覽與活動的新聞論述。2024 年經由跨組室協力，共辦理節慶展廳串聯活動 8 種、開幕記者會 6 場、電臺節目專訪 20 場、高雄地區文教媒體記者聯繫、採訪、對外新聞稿 100 則，4 大報露出 52 則及各類新聞合計 1650 則。

社會服務人力

1. 志工

本館志工服務範疇包含讀者服務、典藏維護與管理、展示維修、教育活動、展場服務、劇場服務、觀眾服務、志工行政、導覽解說、護理、服務台、團體用餐區、節能屋專案、庶務等，2024 年全館志工共計 1,047 人，全年服務時數共計 15 萬 949 小時。



2023 志工科技之旅
2023 Volunteer Technology Tour

Media Promotion

1. Internet Community, Precise Marketing

In response to the rise of 5G mobile networks and the AI generation, the Museum actively approaches audience mobile device usage habits and social network algorithms, carefully managing social media posts, short videos, stories, and other targeted promotional channels. As of October 30th, Facebook fans reached 133,601 with 2.804 million reaches; Instagram had 4,800 followers with 148,000 reaches; Google Maps had 23,403 reviews with an average of 4.5 stars (out of 5).

2. Media Interaction, Data Analysis

Regularly analyze "news public opinion," establishing quarterly news strategies and key performance indicators (KPIs) for the year, distributing and dispersing highlights to optimize exhibition and activity news narratives. In 2024, through cross-departmental collaboration, organized 8 festival exhibition hall connection activities, 6 opening press conferences, 20 radio program interviews, Kaohsiung area cultural and educational media reporter contacts, interviews, 100 external press releases, 52 major newspaper coverage, and 1,650 total news items.

Social Service Personnel

1. Volunteers

Museum volunteer services include reader services, collection maintenance and management, exhibition maintenance, educational activities, exhibition services, theater services, visitor service, volunteer administration, guided tours, nursing, information desk, group dining area, energy-saving house project, and general affairs. In 2024, the Museum had 1,047 volunteers with total annual service hours of 150,949.



導覽實習生
Guided Tour Intern

2. 實習生

為拓展大專生學習領域，本館持續招募寒暑假實習生，依其需求分配至典藏管理、展示設計、教育服務、導覽、媒體宣傳等不同專業崗位，2024 年共計 16 名大專生完成實習工作，總服務 3,959 小時。

3. 社會服務學生

本館於 2012 年訂定「國立科學工藝博物館社會服務學生作業要點」，並於 2019 年進行法規修訂，持續鼓勵青年學子來館進行社會服務。2024 年共計辦理 6 場次教育訓練，共計 153 位學生參與社會服務，總服務 1,589 小時。

公益扶弱

1. 科學小樹苗公益活動計畫

本館集結社會善心人士與企業的愛心，2024 年協助偏鄉弱勢學童到館參觀與學習。除運用公益資源帶領學童探索與體驗科學，本計畫也提供資源予教育人員申請、多元應用，讓科學教育人員進入偏鄉學校服務，擴大公益服務的效益。本年贊助款共計有 107 萬 5,395 元，並服務 61 個團體及 2,074 名學員。



2. Interns

To expand college students' learning fields, the Museum continues to recruit winter and summer vacation interns, assigning them to different professional positions in collection management, exhibition design, educational services, guided tours, and media promotion based on their needs. In 2024, 16 college students completed internships with total service of 3,959 hours.

3. Social Service Students

The Museum established "National Science and Technology Museum's Social Service Student Operation Guidelines" in 2012 and revised regulations in 2019, continuing to encourage students to participate in social service at the Museum. In 2024, 6 educational training sessions were organized with 153 students participating in social service, totaling 1,589 service hours.



Public Welfare and Support

1. "Little Science Sprouts" Project

The Museum gathered support from kind-hearted individuals and businesses to help disadvantaged rural students visit and learn at the Museum in 2024. Besides using public welfare resources to lead students in exploring and experiencing science, this project also provides resources for educators to apply for diverse applications, allowing science educators to serve in rural schools and expand the benefits of public welfare service. This year's sponsorship totaled NT\$1,075,395, serving 61 groups with 2,074 participants.

2. 弱勢團體服務

(1) 視障團體導覽

本館安排視障團體並由專業陪同人員導覽服務，陪同人員運用引導技能與口述導覽，提供視障人士展示報讀、觸摸及設施體驗引導等服務。2024 年共 2 場，服務 34 人次。

(2) 新住民科教活動

本館持續落實新住民文化推廣工作，2024 年辦理「南洋節慶趣味科學培訓」及「東南亞文化節日科學」活動。讓參與的學生認識新住民原生國家的節日文化，培養其國際化知識及探索其中的科學與創意，計服務 5,800 人次。



其他重要績效

1. 具博物館特色的非營利幼兒園

幼兒園教育內容結合館內展示資源，每月規劃「科學小遊俠」活動，將學習拓展至本館各展示廳；本年度透過「科學公主樂遊趣」科學劇，啟發幼兒對光影之興趣，並利用園區空間，規劃戶外活動，使幼兒觀察影子長短，從遊樂中學習。

2. Disadvantaged Group Services

(1) Visually Impaired Group Tours

The Museum arranges tours for visually impaired groups with professional accompanying staff using guidance skills and verbal descriptions, providing exhibition reading, touch experiences, and facility guidance services. In 2024, 2 sessions were held, serving 34 participants.

(2) New Immigrant Science Education Activities

The Museum continues to implement new immigrant cultural promotion work, organizing "Southeast Asian Festival Fun Science Training" and "Southeast Asian Cultural Festival Science" activities in 2024. Helping participating students understand the festival culture of new immigrants' native countries, cultivating international knowledge and exploring the science and creativity within, serving 5,800 participants.

Other Important Achievements

1. Museum-Featured Non-profit Kindergarten

Kindergarten education content integrates museum exhibition resources, monthly planning "Little Science Rangers" activities, extending learning to museum exhibition halls; this year through "Science Princess Fun Tour" science drama, inspiring children's interest in light and shadow, and utilizing park space to plan outdoor activities, enabling children to observe shadow lengths and learn through play.



2. 品質管理系統驗證

本館 2024 年持續透過全面內部稽核與外部驗證，確保服務流程完整性與一致性。由 SGS 台灣檢驗科技股份有限公司完成實地訪查驗證，並以無缺失通過驗證取得證書。



SGS ISO9001:2015 證書
SGS ISO9001:2015 Certificate

3. 敦親睦鄰

本館睦鄰活動邀請鄰近 14 里里民參加，活動內容包括參觀常設展、電影欣賞、特展參觀等。本館亦視需要辦理公聽會，邀請附近里長說明館方政策，藉此徵詢民意作為施政參考，以維繫社區良好公共關係。



年度里民電影欣賞，里民登記領票入場
Annual Resident Movie Screening,
Residents Registering for Tickets

4. 開拓多元宣傳管道

積極提升本館知名度，全年投稿 60 則博物館學會匯訊、投放 104 期共 879 則電子報訊息。與高美館合作行銷，提供雙方會員折扣；與新光 SKM Park Outlets 合作，以新媒體形式互相推播；於臺鐵科工館車站內張貼大型文宣介紹本館自策特展。

2. Quality Management System Certification

In 2024, the Museum continued to ensure service process integrity and consistency through comprehensive internal audits and external verification. SGS Taiwan completed on-site inspection verification and passed certification with no deficiencies.



2024 年 7 月 18 日實地驗證啟動會議
July 18, 2024 On-site Verification
Kick-off Meeting

3. Community Relations

The Museum's community activities invite residents from 14 neighboring villages to participate, including permanent exhibition visits, movie screenings, and special exhibition visits. The Museum also holds public hearings as needed, inviting nearby village chiefs to explain museum policies and gather public opinion for policy reference, maintaining good community public relations.



公建計畫籌備會議，邀請 14 位里長來館共議
Public Construction Project Preparation Meeting,
Inviting 14 Village Chiefs for Discussion

4. Expanding Diverse Promotion Channels

Actively enhance museum visibility, submitting 60 articles to Museum Association Newsletter, distributing 879 e-newsletter messages over 104 periods throughout the year. Cooperating with Kaohsiung Museum of Fine Arts for marketing, offering mutual member discounts; collaborating with Shin Kong SKM Park Outlets for new media mutual promotion; posting large promotional materials introducing self-curated special exhibitions at TRA NSTM Station.

總務與環境

2024 年積極配合政府推動節能及淨零碳排政策，爭取教育部補助經費汰換北館儲冰式空調設備，並開始推動碳盤查。各項庶務工作本開源節流原則持續推動，具體成果如下：

庶務管理

1. 挹注館務基金，擷節採購支出

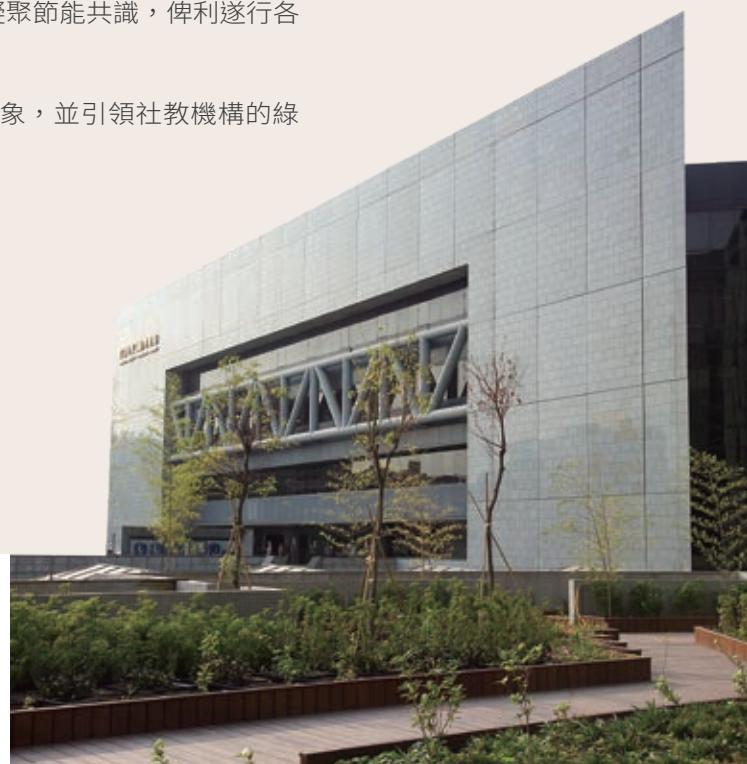
2024 年積極開源挹注館務基金收入共 453 萬 7,815 元，辦理採購業務總計節約 1 億 9,783 萬 222 元。

2. 加強節電措施，減碳節費雙贏

為落實節能減碳，於離峰時段管控電梯、飲水機、燈光及空調的使用時間。依統計資料，本年用電量較去年節省 45,329 度。

機電設施

1. 持續辦理年度高低壓設備電氣檢驗、消防設備安全檢修申報及改善、室內空氣品質檢測，維持場域安全、舒適。
2. 維持館內監視器、弱電、通訊、昇降梯等設備可靠運作，俾維場域安全並提供智慧、友善之場域。
3. 辦理淨零轉型 - 空調節能改善計畫，汰換老舊空調主機設備為高能效設備，持續進行深度節能。
4. 辦理 ISO50001 能源管理系統認證，透過全館同仁凝聚節能共識，俾利遂行各式節電措施。
5. 辦理碳盤查作業，以提升環境責任與可持續發展形象，並引領社教機構的綠色轉型和評估各減量措施效益。



General Affairs and Environment

The Visitor Services Division manages public relations marketing, visitor services, guided tours, community relationship development, volunteer management, cultural and creative product operations, and other public service planning, research, implementation, and promotion matters.

General Affairs Management

1. Inject Museum Fund, Economize Procurement Expenditure

In 2024, actively expanded income injecting NT\$4,537,815 into museum fund, processing procurement operations with total savings of NT\$197,830,222.

2. Strengthen Power-saving Measures, Win-win in Carbon Reduction and Cost Saving

To implement energy conservation and carbon reduction, controlling elevator, drinking fountain, lighting, and air conditioning usage times during off-peak hours. According to statistics, this year's power consumption was reduced by 45,329 kWh.

Mechanical and Electrical Facilities

1. Continue to conduct annual high and low voltage equipment electrical inspections, fire safety equipment inspection reports and improvements, indoor air quality testing, maintaining venue safety and comfort.
2. Maintain reliable operation of museum surveillance, weak current, communication, elevator and other equipment to maintain venue safety and provide smart, friendly spaces.
3. Implement net-zero transition - air conditioning energy-saving improvement plan, replacing old air conditioning main equipment with high-efficiency equipment, continuing deep energy conservation.
4. Conduct ISO50001 energy management system certification, building energy-saving consensus among all museum staff to implement various power-saving measures.
5. Conduct carbon inventory to enhance environmental responsibility and sustainable development image, leading social education institutions' green transformation and evaluating various reduction measure benefits.

園區環境

1. 環境改善

(1) 本館秉持以人為本理念，2024 年完成「園區全面優化工程」。進行北館園區路面排水及汽、機車停車場改善，整合優化北館園區人行道動線，提供社區民眾良善遊憩空間。

(2) 本年 10 月 3 日山陀兒颱風登陸高雄，造成本館園區景觀受損嚴重，樹木傾倒約 200 棵，以 3 週時間完成園區復原。

2. 戶外藝術休憩空間營造

為使民眾有更加愉悅的參訪體驗，除基本環境維護工作外，戶外休憩空間的營造亦為重點項目。本館的戶外空間融合了自然、人文與藝術的特色，18 公頃的園區內擁有數項公共藝術品、綠地和廣場，不僅開放民眾運動、休閒，也提供各界租借舉辦聚會和活動。

公共藝術品 / Public Sculptures



希望之塔
Tower of Hope



昇華
Sublimation

Park Environment

1. Environmental Improvement

(1) Following people-oriented principles, the Museum completed the "Comprehensive Park Area Optimization Project" in 2024. Improved North Complex park area drainage and car/motorcycle parking lots, integrated and optimized North Complex park area pedestrian walkway routes, providing community residents with quality recreational space.

(2) On October 3rd this year, Typhoon Sandol made landfall in Kaohsiung, causing severe landscape damage to the museum park area, with about 200 fallen trees, completing park restoration in 3 weeks.

2. Outdoor Art and Recreation Space Creation

To provide visitors with a more enjoyable experience, besides basic environmental maintenance, creating outdoor recreational spaces is also a key focus. The Museum's outdoor space integrates features of nature, culture, and art. The 18-hectare park area contains several public artworks, green spaces and plazas, not only open for public exercise and leisure, but also available for rental for gatherings and activities.



渾儀
Armillary Sphere







環區步道
Ring Road



南館度量衡廣場
South Complex: Multifunctional Measurement Square



劇院廣場
Theater Plaza



環區步道
Ring Road



北館追風廣場
North Complex: Wind-chasing Plaza



人事概況

本館組織架構圖

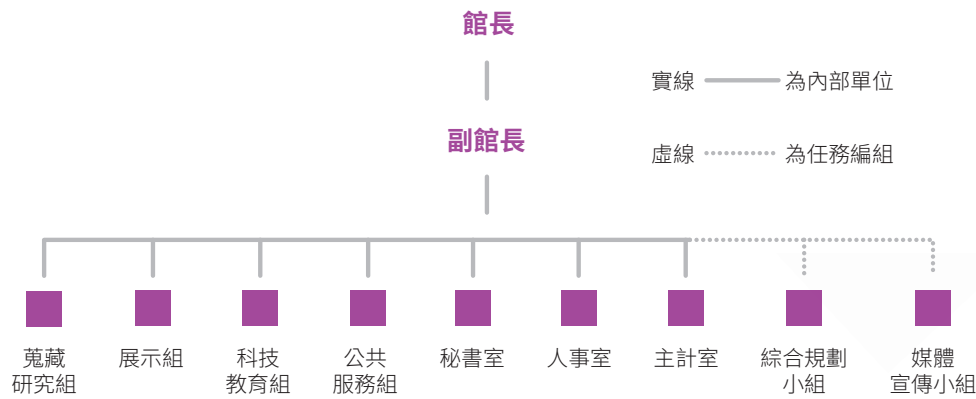


圖 1、 本館組織架構圖

員額

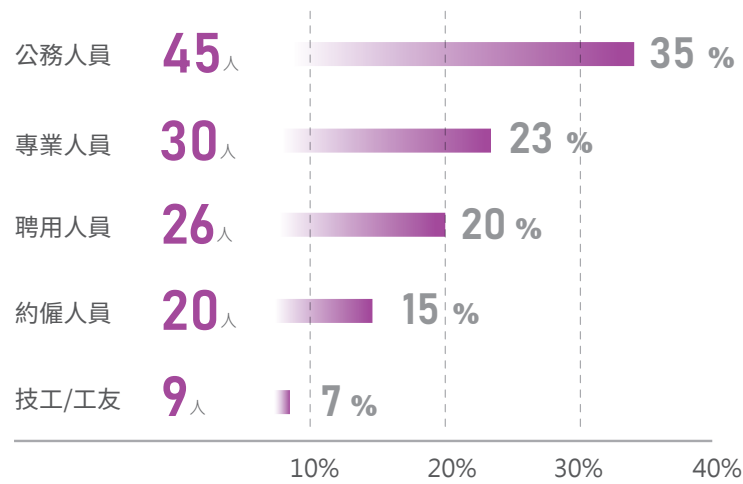


圖 2、 預算員額

Personnel Overview

Museum Organizational Structure

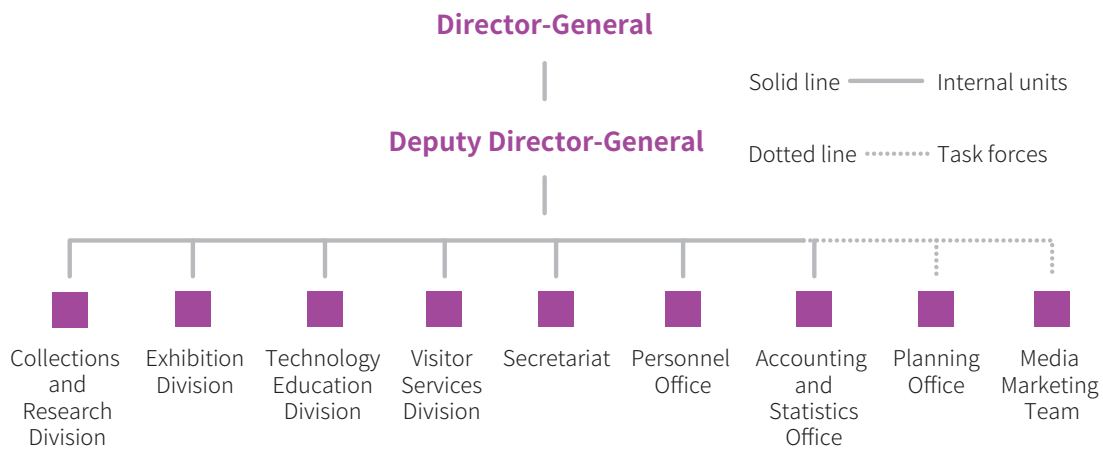


Figure 1. Museum Organizational Structure

Staff Allocation

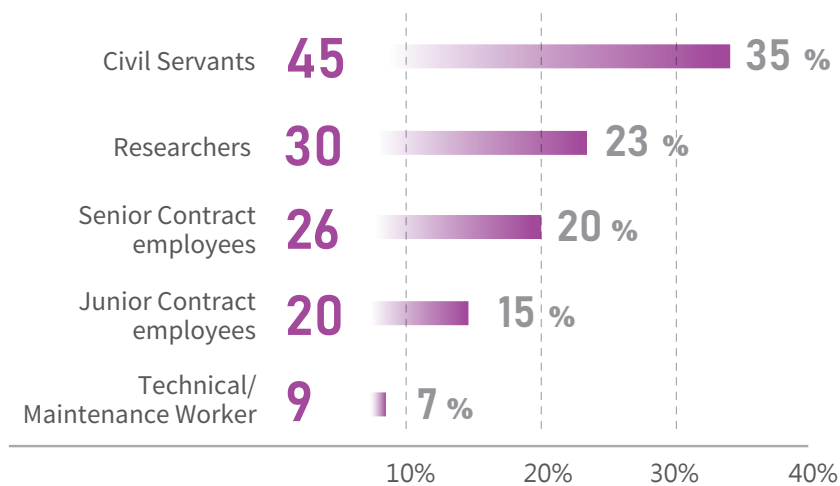


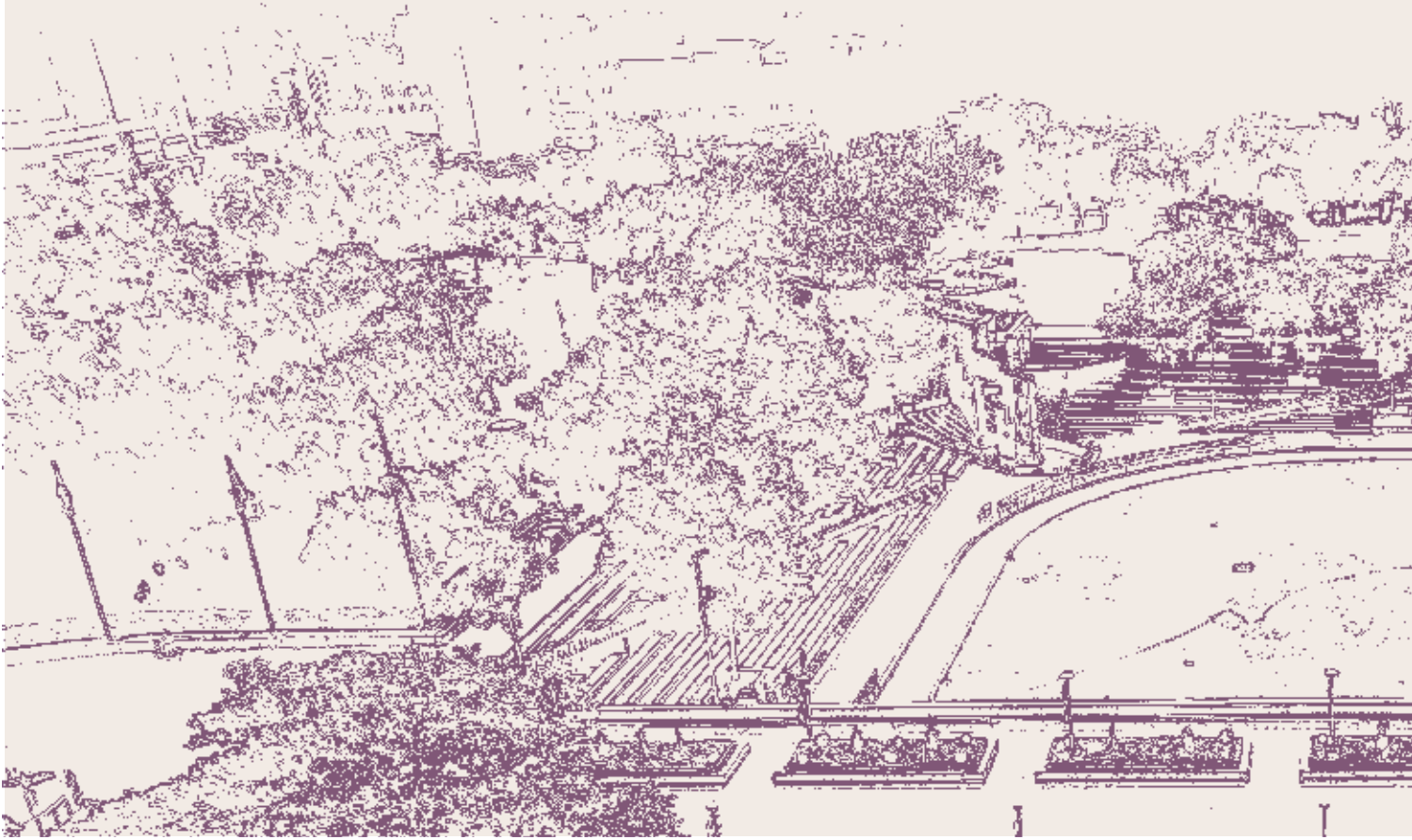
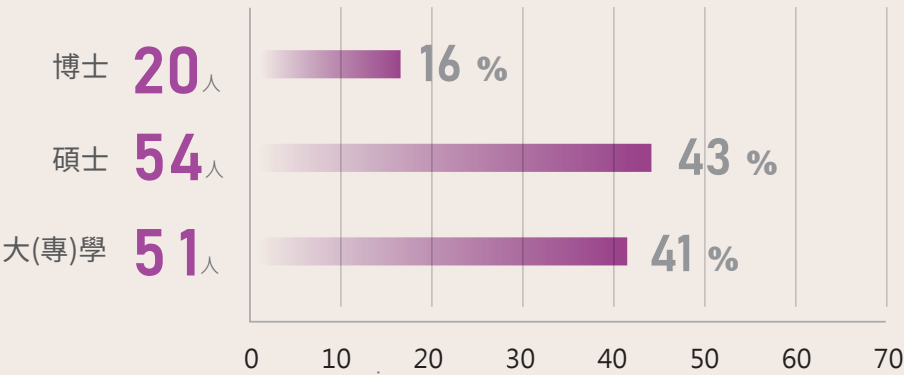
Figure 2. Budgeted Staff

本館現有員額統計表

2024.10.31

類別 \ 人數	現有人數	男性人數	男性比率	女性人數	女性比率
專業人員	27	12	44%	15	56%
公務人員	44	26	59%	18	41%
約聘僱人員	45	16	36%	29	64%
技工友人員	9	7	78%	2	22%
總計	125	61	49%	64	51%

學歷統計

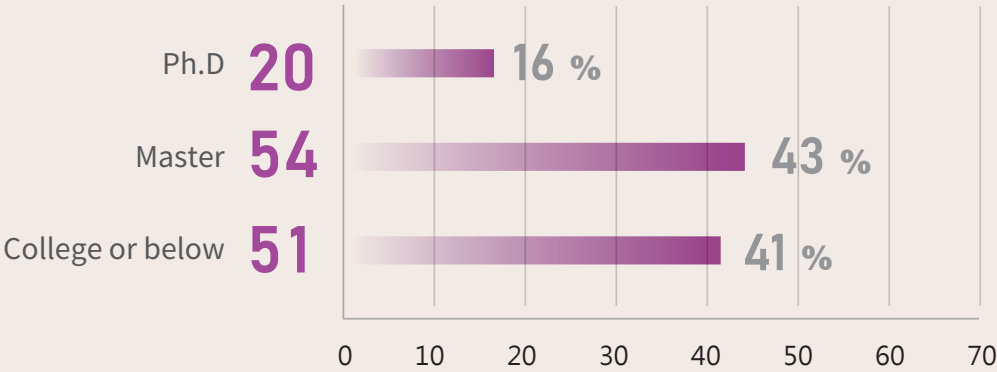


Current Staff Statistics Table

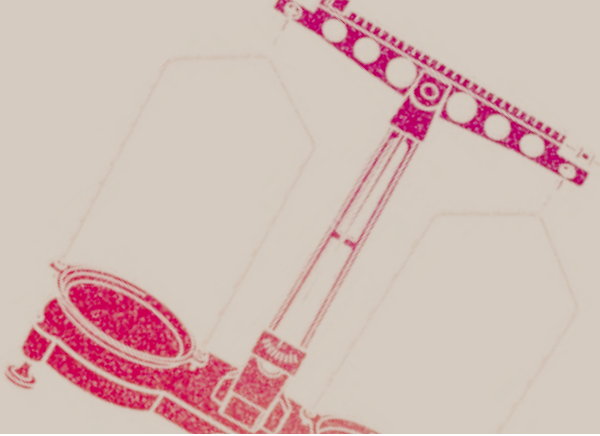
2024.10.31

Numbers Category	Current Number	Male Number	Male Ratio	Female Number	Female Ratio
Professional	27	12	44%	15	56%
Civil Servant	44	26	59%	18	41%
Contract employee	45	16	36%	29	64%
Technical & maintenance workers	9	7	78%	2	22%
Total	125	61	49%	64	51%

Staff Allocation



財務概況



年度收支

科工館 2024 年執行結果總收入共計 422,710 千元，主要來源為社教機構發展補助收入 192,095 千元，佔總收入 45.44%，自籌收入 230,615 千元，占總收入 54.56%。業務成本與費用 497,068 千元，佔總收入 117.59%，業務外費用 10 千元，佔總收入 0.002%，本年度實際短絀數 74,368 千元，主要原因係作業基金應依規定攤提折舊及攤銷所致。就收入面言之，科工館 2024 年自籌比率為 54.56%

單位：千元

科 目	2024 年度預算數	2024 年度決算數	2023 年度決算數
	金 額	金 額	金 額
業務收入	323,566	372,821	371,973
勞務收入	41,937	48,335	40,086
教學收入	43,315	60,896	79,779
其他業務收入	238,314	263,590	252,108
業務外收入	31,411	48,889	45,335
財務收入	1,400	4,521	3,301
其他業務外收入	30,011	45,368	42,034
收入合計	354,977	422,710	417,308
業務成本與費用	469,714	497,068	502,839
勞務成本	253,756	250,860	255,269
教學成本	34,197	52,258	67,047
管理費用及總務費用	181,761	193,950	180,523
業務外費用	0	10	207
支出合計	469,714	497,078	503,046
本期賸餘 (短絀 -)	-114,737	-74,368	-85,738
政府經常門補助比例	54.11%	45.44%	44.58%
機關經常門自籌比例	45.89%	54.56%	55.42%
自籌收入	162,882	230,615	231,281

資料來源：各年度預、決算書。

Financial Overview

Annual Income and Expenditure

NSTM's total income for 2024 was 422,710thousand NT dollars, with main source being social education institution development subsidy income of 192,095 thousand NT dollars, accounting for 45.44% of total income, self-generated income of 230,615thousand dollars, accounting for 54.56% of total income. Operating costs and expenses were 497,068thousand NT dollars, accounting for 117.59% of total income, non-operating expenses were 10thousand NT dollars, accounting for 0.002% of total income, actual deficit for this year was 74,368thousand NT dollars, mainly due to required depreciation and amortization of operating funds. In terms of income, NSTM's self-generated income ratio for 2024 was 54.56%

Thousand NT Dollars

科 目	2024 Budget	2024 Final Account	2023 Final Account
	Amount	Amount	Amount
Operating Income	323,566	372,821	371,973
Service Income	41,937	48,335	40,086
Education Income	43,315	60,896	79,779
Other Operating Income	238,314	263,590	252,108
Non-operating Income	31,411	48,889	45,335
Financial Income	1,400	4,521	3,301
Other Non-operating Income	30,011	45,368	42,034
Total Income	354,977	422,710	417,308
Operating Costs and Expenses	469,714	497,068	502,839
Service Costs	253,756	250,860	255,269
Education Costs	34,197	52,258	67,047
Management and General Expenses	181,761	193,950	180,523
Non-operating Expenses	0	10	207
Total Expenditure	469,714	497,078	503,046
Current Surplus (Deficit-)	-114,737	-74,368	-85,738
Government Current Subsidies Ratio	54.11%	45.44%	44.58%
Agency Current Self-generated Ratio	45.89%	54.56%	55.42%
Self-generated Income	162,882	230,615	231,281

Source: Annual budget and final account documents.

年度資本門

科工館 2024 年度資本門預算增置固定資產計 37,730 千元，其中政府補助支應 25,655 千元，自籌經費支應 12,075 千元，共計 37,730 千元。

2024 年度固定資產建設改良擴充決算表
單位：千元

計畫科目	可用預算數	本年度決算數
固定資產之增置		
政府補助	25,655	29,607
自籌經費	12,075	7,023
合 計	37,730	36,630

歷年收支預決算

實施作業基金後近 5 年收入預、決算表
單位：千元

項目 年度	預算					決算				
	總計	社教機構補助	%	自籌部分	%	總計	社教機構補助	%	自籌	%
2024	354,977	192,095	54.11	162,882	45.89	422,710	192,095	45.44	230,615	54.56
2023	342,735	186,026	54.28	156,709	45.72	417,307	186,026	44.58	231,281	55.42
2022	328,506	186,026	56.63	142,480	43.37	394,632	186,026	47.14	208,606	52.86
2021	316,792	180,219	56.89	136,573	43.11	362,069	180,219	49.77	181,850	50.23
2020	330,880	200,244	60.52	130,636	39.48	391,889	200,244	51.10	191,645	48.90

資料來源：各年度預、決算書

實施作業基金後近 5 年支出預、決算表
單位：千元

項目 年度	預算					決算					
	總計	經常支出	% 經常支出	資本支出	% 資本支出	總計	經常支出		% 經常支出	資本支出	% 資本支出
							人事費	經常費用			
2024	507,444	469,714	92.56	37,730	7.44	533,708	148,715	348,363	93.14	36,630	6.86
2023	535,217	479,775	89.64	55,442	10.36	554,436	142,811	360,235	90.73	51,390	9.27
2022	539,840	465,741	86.27	74,099	13.73	563,204	140,153	351,023	87.21	72,028	12.79
2021	541,154	449,125	82.99	92,029	17.01	560,233	136,692	335,717	84.32	87,824	15.68
2020	505,554	437,232	86.49	68,322	13.51	565,027	137,591	364,573	88.87	62,863	11.13

資料來源：各年度預、決算書

Annual Capital Expenditure

NSTM's 2024 fiscal year capital budget for fixed asset acquisition totaled 37,730 thousand NT dollars, of which government subsidies accounted for 25,655 thousand NT dollars, self-generated funds accounted for 12,075 thousand NT dollars, totaling 37,730 thousand NT dollars.

2024 Fiscal Year Fixed Assets Construction Improvement and Expansion Final Account Table

Unit: Thousand NT Dollars

Plan Item	Available Budget	Current Year Final Account
Fixed Assets Acquisition		
Government Subsidies	25,655	29,607
Self-generated Funds	12,075	7,023
Total	37,730	36,630

Historical Income and Expenditure Budget and Final Accounts

Since Implementation of Operation Fund Past 5 Years Income Budget and Final Account Table

Unit: Thousand NT Dollars

Items Year	Budget					Final Account				
	Total	Social Education Institution Subsidies	%	Self-generated Portion	%	Total	Social Education Institution Subsidies	%	Self-generated Portion	%
2024	354,977	192,095	54.11	162,882	45.89	422,710	192,095	45.44	230,615	54.56
2023	342,735	186,026	54.28	156,709	45.72	417,307	186,026	44.58	231,281	55.42
2022	328,506	186,026	56.63	142,480	43.37	394,632	186,026	47.14	208,606	52.86
2021	316,792	180,219	56.89	136,573	43.11	362,069	180,219	49.77	181,850	50.23
2020	330,880	200,244	60.52	130,636	39.48	391,889	200,244	51.10	191,645	48.90

Source: Annual budget and final account documents

Since Implementation of Operation Fund Past 5 Years Expenditure Budget and Final Account Table

Unit: Thousand NT Dollars

Items Year	Budget					Final Account					
	Total	Current Expenditure Current	%	Capital Expenditure	%	Total	Current Expenditure		% 93.14	Capital Expenditure 36,630	% 6.86
							Personnel Expenses	Current Expenses			
2024	507,444	469,714	92.56	37,730	7.44	533,708	148,715	348,363	93.14	36,630	6.86
2023	535,217	479,775	89.64	55,442	10.36	554,436	142,811	360,235	90.73	51,390	9.27
2022	539,840	465,741	86.27	74,099	13.73	563,204	140,153	351,023	87.21	72,028	12.79
2021	541,154	449,125	82.99	92,029	17.01	560,233	136,692	335,717	84.32	87,824	15.68
2020	505,554	437,232	86.49	68,322	13.51	565,027	137,591	364,573	88.87	62,863	11.13

Source: Annual budget and final account documents

本館票價與會員介紹

票價介紹

票價 \ 服務	展示廳	電影院	年卡會員
一般票價	100 元	150 元	300 元
優惠票價 (學生、團體、長者)	70 元 / 50 元	100 元 / 70 元 / 75 元	依活動公告

其他活動優惠方案，請詳見現場公告。

會員說明

為提供更優質服務，本館推出會員制度，會員可運用線上系統查詢資訊、報名科教活動、申請團體預約、租借場地等，本館蒐集會員於館內參觀及參與活動之紀錄，透過統計分析以瞭解會員喜好或需求，可作為未來推出客製化服務的參據。



本館官網
Museum Official Website



本館 Instagram
Museum Instagram



本館 Facebook
Museum Facebook

Ticket Prices and Membership Introduction

Ticket Prices

Price \ Service	Exhibition Halls	Theater	Annual Card Member
Regular Price	NT\$100	NT\$150	NT\$300
Discounted Price (Students, Groups, Seniors)	NT\$70/NT\$50	NT\$100/NT\$70/ NT\$75	According to activity announcement

For other promotional offers, please refer to on-site announcements.

Membership Information

To provide better services, the Museum offers a membership system. Members can use the online system to search for information, register for science education activities, apply for group reservations, rent venues, etc. The Museum collects members' records of museum visits and activity participation, using statistical analysis to understand member preferences or needs as reference for future customized services.



本館營業時間及交通

營業時間

- 逢週一、除夕、年初一固定休館（週一逢國定假日則開館），其餘停止開放時間則另行公告。
- 開放時間：09:00-17:00 (16:00 停止售票)

交通方式

1、大眾運輸指南

2、停車資訊

(1) 北館設有收費地下停車場、大客車停車場及洽公停車場，南館設有汽機車收費停車場。

(2) 汽、機車停車入場即開始計費，入場後 20 分鐘內離場免計費。





Museum Hours and Transportation

Business Hours

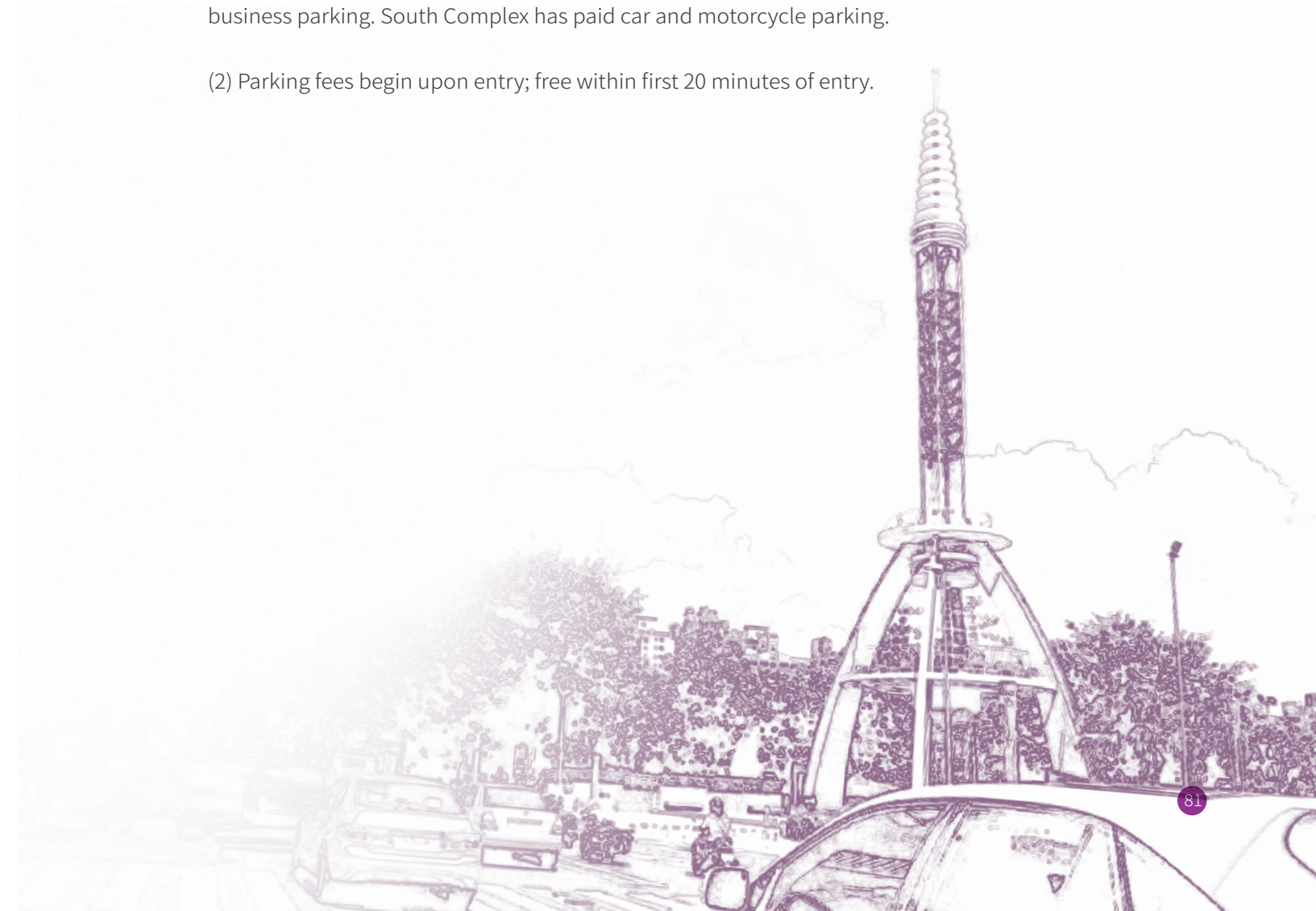
- Closed on Mondays, Chinese New Year's Eve, and First Day of Chinese New Year (Open on Mondays that fall on national holidays). Other closure times will be announced separately.
- Opening Hours: 09:00-17:00 (Ticket sales end at 16:00)

Transportation

1、Public Transportation

2、Parking Information

- (1) North Complex has paid underground parking, bus parking, and official business parking. South Complex has paid car and motorcycle parking.
- (2) Parking fees begin upon entry; free within first 20 minutes of entry.



2024 年大事紀



1/23, 1/25, 1/30, 1/31	館長親訪 14 里里長提供本館年度活動資訊，並討論公建計畫方略。期借鏡各里長多年經營之道，達成敦親睦鄰、共創互助之和諧展望。
2/5	本館辦理 2023-2024 機器人大賽台灣選拔賽，共計選手 1,139 人次參與。
2/11	本館配合開發之「迷宮盒」推廣品取得中華民國發明專利。
3/7-8/31	運用氣象署捐贈地震儀 11 台，於開放式典藏庫辦理「地震來了怎知道—地震儀特展」。
3/14- 5/17	「防疫戰鬥營—登革熱、流感、新冠肺炎」移展馬來西亞馬六甲靜思堂展出。
3/20	與上銀科技合作更新「產業機器人」展示，強化機械手臂的應用情境，新增半導體等展項。
4/4-4/7	與高雄市政府合作辦理「2023 高雄兒童藝術節」系列活動。
4/10	協助勵馨基金會於本館藝文專區辦理「多元家庭與性別教育體驗」特展。
4/12	與國立高雄師範大學共同承辦「112 學年度全國第六屆科技教育創意實作競賽決賽」(教育部國教署主辦)。
4/14, 4/22	與高雄市教育局及財團法人中華民國佛教慈濟慈善事業基金會共同編撰出版「種子的奇蹟 EST-跨域合作環境教育的解方」乙書，分別於新北市及高雄市辦理 2 場新書發表會。
5/29	「防疫戰鬥營」移展馬來西亞麻坡靜思堂，辦理開幕典禮。

2024 Major Events

1/23, 1/25, 1/30, 1/31	Director-General personally visited 14 village chiefs to provide museum annual activity information and discuss public construction project strategies. Seeking to learn from village chiefs' years of management experience to achieve neighborly harmony and mutual assistance outlook.
2/5	The Museum organized 2023-2024 Robot Competition Taiwan Selection, with 1,139 participant entries.
2/11	The Museum's developed "Maze Box" promotional item received ROC invention patent.
3/7-8/31	Using 11 seismometers donated by Central Weather Administration, organized "How Do We Know When Earthquakes Come? - Seismometer Special Exhibition" in open storage.
3/14- 5/17	"The Diseases Prevention Combat Camp - Dengue Fever, Influenza, COVID-19 exhibition" moved to Melaka Jing Si Hall, Malaysia.
3/20	Collaborated with HIWIN Technologies to update "Industrial Robot" exhibition, strengthening robotic arm application scenarios, adding semiconductor and other exhibits.
4/4-4/7	Collaborated with Kaohsiung City Government to organize "2023 Kaohsiung Children's Arts Festival" series activities.
4/10	Assisted The Garden of Hope Foundation in organizing "Diverse Families and Gender Education Experience" special exhibition in the Museum's arts and culture area.
4/12	Co-organized "2023 Academic Year 6th National Technology Education Creative Implementation Competition Finals" with National Kaohsiung Normal University (hosted by K-12 Education Administration, Ministry of Education).
4/14, 4/22	Co-authored and published "Miracle of Seeds EST-Solutions for Cross-domain Cooperation in Environmental Education" with Education Bureau of Kaohsiung City Government and Buddhist Tzu Chi Charity Foundation, holding 2 book launch events in New Taipei City and Kaohsiung City.
5/29	"The Diseases Prevention Combat Camp" exhibition moved to Muar Jing Si Hall, Malaysia, holding opening ceremony.

6/5	高雄市議會教育委員會由鄭孟洳議員率議會、高雄市政府教育局及文化局一行 21 人至本館考察，了解學校如何運用博物館，實施淨零及氣候變遷相關議題之戶外教學活動。
6/12	辦理「跨域合作-共同推動傳染病防治教育」記者會，宣告本館與疾病管制署、國家衛生研究院、高雄市政府衛生局、慈濟基金會等單位的合作成果。
6/15	「瘋狂科學家-趣味科學特展」移展慈濟安平聯絡處展出。
6/29	「人體內的縮小軍-生醫創新特展」移展松山奉天宮展出。
7/2	入藏程序簡化為依新設置之「國立科學工藝博物館蒐藏審議委員會組織要點」辦理藏品審議作業，本日為第 1 次審議委員會議，由李館長秀鳳主持。
7/18	由台灣檢驗科技股份有限公司進行本館 ISO9001:2015 品質管理系統外部驗證，以無缺失通過並取得驗證證書。
7/20-7/21	本館與高雄市政府環保局合作辦理「2024 雄自綠生活節：低碳的永續慶典」活動。
8/1-9/15	「以尺類推山水長一水土保持量測文物展暨科普推廣活動」，展期自 8 月 1 日至 9 月 15 日，於 B1F 開放式典藏庫、6F 莫拉克風災重建紀念廳「防災社區」單元進行展出。
8/8-8/11	本館協辦臺灣索尼股份有限公司「第 12 屆索尼創意科學大賞-科學玩具成果展(高雄場)」，共同推廣創意科學。
8/21	本館與韓國朝鮮大學 (Cho Sun University,CSU) 簽訂第二次 5 年期合作意願書。
9/14-9/15	本館與財團法人雲門文化藝術基金會合辦《國泰雲門隨行吧》公益舞蹈表演。活動 2 場次共計 1,645 人次參與。
9/26-9/27	教育部主辦，2024 年輪由本館承辦之全國科普論壇於南館舉行，共計 250 人參與，並出版科普論壇手冊及電子版論文集各 1 冊。
10/25-10/26	第 43 屆高雄市中小學科學園遊會，共設置 93 個趣味科學遊戲攤位。

6/5	Kaohsiung City Council's Education Committee led by Councilor Cheng Meng-ju with 21 representatives from City Council, Education Bureau, and Bureau of Cultural Affairs visited the Museum to understand how schools can use the Museum for implementing net-zero and climate change-related field trip activities.
6/12	Held "Cross-domain Cooperation - Jointly Promoting Infectious Disease Prevention Education" press conference, announcing collaboration results with Taiwan Centers for Disease Control, National Health Research Institutes, Department of Health of Kaohsiung City Government, Tzu Chi Foundation, etc.
6/15	"Eureka! The Fun Science Zone Special Exhibition" moved to Tzu Chi Anping Liaison Office.
6/29	"The Fantastic Army in Human Body - Biomedical Innovation Special Exhibition" moved to Songshan Fengtian Temple.
7/2	Simplified collection procedure according to newly established "NSTM Collection Review Committee Organization Guidelines," first review committee meeting chaired by Director-General Lee Hsiu-feng.
7/18	SGS Taiwan conducted external verification of the Museum's ISO9001:2015 quality management system, passed without deficiencies and received certification.
7/20-7/21	The Museum collaborated with Kaohsiung City Environmental Protection Bureau to organize "2024 Kaohsiung Green Living Festival: Sustainable Celebration of Low Carbon" event.
8/1-9/15	"Measuring Landscapes with Rulers - Soil and Water Conservation Measurement Artifacts Exhibition and Science Education Promotion Activities," exhibited from August 1st to September 15th at B1F Open Storage and 6F Morakot Typhoon Reconstruction Memorial Hall "Disaster Prevention Community" unit.
8/8-8/11	The Museum co-organized "12th Sony Creative Science Award - Science Toy Achievement Exhibition (Kaohsiung Venue)" with Sony Taiwan to jointly promote creative science.
8/21	The Museum signed second 5-year cooperation agreement with Cho Sun University (CSU), Korea.
9/14-9/15	The NSTM in collaboration with the Cloud Gate Cultural and Arts Foundation, organized the charitable dance performance "Cathay Cloud Gate On-the-Go." The event had two sessions with a total attendance of 1,645 people.
9/26-9/27	The 2024 National Science Popularization Forum, hosted by the Ministry of Education and organized by our museum this year, was held at the South Complex with 250 participants. One handbook and one electronic volume of the forum proceedings were published.
10/25-10/26	The 43rd Kaohsiung Primary and Junior High School Science Fair featured 93 fun science game booths.

10/31	2024 年本館自策「星動時刻・量測傳說」特展開展，展示量測科技的奧妙。展期自 2024 年 10 月 31 日至 2025 年 9 月 1 日止。
11/7	第 6 屆「唐獎榮耀展」開展，帶領民眾探索唐獎得主的得獎事蹟與貢獻。展期自 2024 年 11 月 7 日至 2026 年 11 月 6 日止。
12/2	本館榮獲勞動部主辦之全國第 22 屆金展獎（政府典範組）。
12/14	本館主辦之第 14 屆手擲機競賽暨頒獎，本屆共計有來自全台 37 所國中的 199 名學生參賽。
12/20	本館與國家實驗研究院及國家太空中心合辦「國家科技寶藏 - 科學家的秘密基地 2.0」特展，展期自 2024 年 12 月 20 日至 2025 年 12 月 19 日止。



10/31	In 2024, the NSTM launched the special exhibition "Measuring Technology," showcasing the wonders of measurement technology. The exhibition period is from October 31, 2024, to September 1, 2025.
11/7	The 6th "The Glory of the Tang Prize Exhibition" opened, leading the public to explore the achievements and contributions of Tang Prize laureates. The exhibition period is from November 7, 2024, to November 6, 2026.
12/2	The NSTM was honored with the 22nd National Gold Exhibition Award (Government Model Group), hosted by the Ministry of Labor.
12/14	The NSTM hosted the 14th National Hand-launched Aircraft Flight Competition and Award Ceremony, with 199 students from 37 junior high schools in Taiwan participating.
12/20	The NSTM in cooperation with the National Applied Research Laboratories and Taiwan Space Agency, organized the special exhibition "National Science Treasures: Scientists' Secret Base 2.0," which exhibits from December 20, 2024, to December 19, 2025.



國立科學工藝博物館 113年報

發行人 李秀鳳
主編 吳佩修、郭乃綺、蔡怡伶、張景勛
執行編輯 郭乃綺、張景勛
編輯小組 王珠玲、吳毓純、林秀慈、洪雪琴、陳達材、徐鼎源、許東家、
莊庭瑜、張景勛、鄭春翔
出版機關 國立科學工藝博物館
地址 高雄市80765三民區九如一路720號
電話 886-7-3800089
傳真 886-7-3846437
網址 <http://www.nstm.gov.tw>
設計製作 翰堂設計事業有限公司
翻譯 碧詠翻譯資訊有限公司
出版年月 民國114年1月
版次 初版
定價 新台幣150元
ISBN 9786263456273
GPN 4711400016